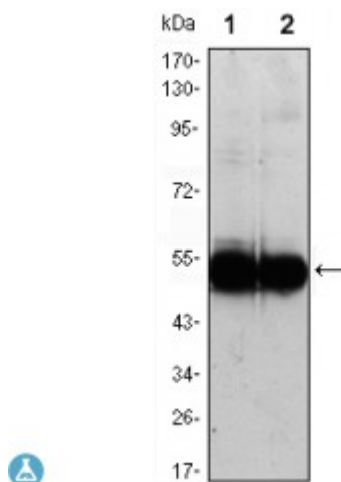


Anti-VCAM-1 antibody



Description	Mouse monoclonal to VCAM-1.
Model	STJ98446
Host	Mouse
Reactivity	Human
Applications	ELISA, IHC, WB
Immunogen	Purified recombinant fragment of human VCAM-1 expressed in E. Coli.
Gene ID	7412
Gene Symbol	VCAM1
Dilution range	WB 1:500-1:2000IHC 1:200-1:1000ELISA 1:10000
Specificity	VCAM-1 Monoclonal Antibody detects endogenous levels of VCAM-1 protein.
Tissue Specificity	Expressed on inflammed vascular endothelium, as well as on macrophage-like and dendritic cell types in both normal and inflammed tissue.
Purification	Affinity purification
Clone ID	6G9
Note	For Research Use Only (RUO).
Protein Name	Vascular cell adhesion protein 1 V-CAM 1 VCAM-1 INCAM-100 CD antigen CD106
Clonality	Monoclonal
Conjugation	Unconjugated

Isotype	IgG1
Formulation	Ascitic fluid containing 0.03% sodium azide.
Storage Instruction	Store at -20°C, and avoid repeat freeze-thaw cycles.
Database Links	HGNC:12663OMIM:192225
Alternative Names	Vascular cell adhesion protein 1 V-CAM 1 VCAM-1 INCAM-100 CD antigen CD106
Function	Important in cell-cell recognition. Appears to function in leukocyte-endothelial cell adhesion. Interacts with integrin alpha-4/beta-1 (ITGA4/ITGB1) on leukocytes, and mediates both adhesion and signal transduction. The VCAM1/ITGA4/ITGB1 interaction may play a pathophysiologic role both in immune responses and in leukocyte emigration to sites of inflammation.
Sequence and Domain Family	Either the first or the fourth Ig-like C2-type domain is required for VLA4-dependent cell adhesion.
Cellular Localization	Membrane. Single-pass type I membrane protein.
Post-translational Modifications	Sialoglycoprotein.

St John's Laboratory Ltd

F +44 (0)207 681 2580

T +44 (0)208 223 3081

W <http://www.stjohnslabs.com/>

E info@stjohnslabs.com