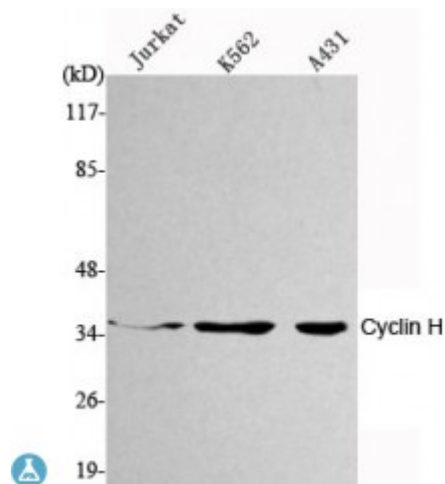


Anti-Cyclin H antibody



Description	Mouse monoclonal to Cyclin H.
Model	STJ98481
Host	Mouse
Reactivity	Canine, Human, Mouse, Rat, Swine
Applications	WB
Immunogen	Purified recombinant human Cyclin H protein fragments expressed in E.coli.
Gene ID	902
Gene Symbol	CCNH
Dilution range	WB 1:1000-1:2000
Specificity	Cyclin H Monoclonal Antibody detects endogenous levels of Cyclin H protein.
Purification	Affinity purification
Note	For Research Use Only (RUO).
Protein Name	Cyclin-H MO15-associated protein p34 p37
Clonality	Monoclonal
Conjugation	Unconjugated
Formulation	Purified mouse monoclonal in buffer containing 0.1M Tris-Glycine (pH 7.4, 150 mM NaCl) with 0.2% sodium azide, 50% glycerol.
Concentration	1 mg/ml

Storage Instruction	Store at -20°C, and avoid repeat freeze-thaw cycles.
Database Links	HGNC:1594OMIM:601953
Alternative Names	Cyclin-H MO15-associated protein p34 p37
Function	Regulates CDK7, the catalytic subunit of the CDK-activating kinase (CAK) enzymatic complex. CAK activates the cyclin-associated kinases CDK1, CDK2, CDK4 and CDK6 by threonine phosphorylation. CAK complexed to the core-TFIIF basal transcription factor activates RNA polymerase II by serine phosphorylation of the repetitive C-terminal domain (CTD) of its large subunit (POLR2A), allowing its escape from the promoter and elongation of the transcripts. Involved in cell cycle control and in RNA transcription by RNA polymerase II. Its expression and activity are constant throughout the cell cycle.
Cellular Localization	Nucleus.

St John's Laboratory Ltd

F +44 (0)207 681 2580

T +44 (0)208 223 3081

W <http://www.stjohnslabs.com/>

E info@stjohnslabs.com