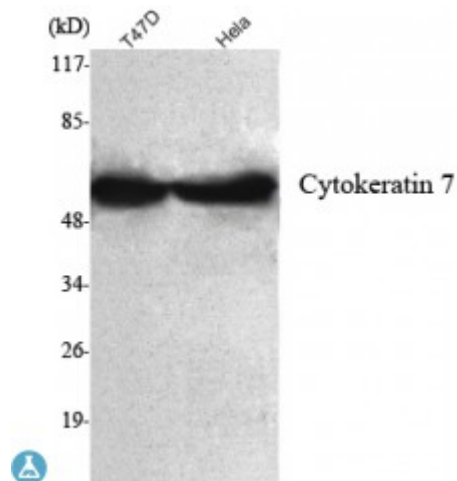


Anti-Cytokeratin 7 antibody



Description	Mouse monoclonal to Cytokeratin 7.
Model	STJ98484
Host	Mouse
Reactivity	Canine, Human, Mouse, Rat
Applications	IF, WB
Immunogen	Purified recombinant human Cytokeratin 7 (C-terminal) protein fragments expressed in E.coli.
Immunogen Region	C-terminal
Gene ID	3855
Gene Symbol	KRT7
Dilution range	WB 1:1000-1:2000IF 1:100-1:500
Specificity	Cytokeratin 7 Monoclonal Antibody detects endogenous levels of Cytokeratin 7 protein.
Tissue Specificity	Expressed in cultured epidermal, bronchial and mesothelial cells but absent in colon, ectocervix and liver. Observed throughout the glandular cells in the junction between stomach and esophagus but is absent in the esophagus.
Purification	Affinity purification
Note	For Research Use Only (RUO).
Protein Name	Keratin, type II cytoskeletal 7 Cytokeratin-7 CK-7 Keratin-7 K7 Sarcolectin Type-II keratin Kb7

Clonality	Monoclonal
Conjugation	Unconjugated
Formulation	Purified mouse monoclonal in buffer containing 0.1M Tris-Glycine (pH 7.4, 150 mM NaCl) with 0.2% sodium azide, 50% glycerol.
Concentration	1 mg/ml
Storage Instruction	Store at -20°C, and avoid repeat freeze-thaw cycles.
Database Links	HGNC:64450MIM:148059
Alternative Names	Keratin, type II cytoskeletal 7 Cytokeratin-7 CK-7 Keratin-7 K7 Sarcolectin Type-II keratin Kb7
Function	Blocks interferon-dependent interphase and stimulates DNA synthesis in cells. Involved in the translational regulation of the human papillomavirus type 16 E7 mRNA (HPV16 E7).
Cellular Localization	Cytoplasm
Post-translational Modifications	Arg-20 is dimethylated, probably to asymmetric dimethylarginine.

St John's Laboratory Ltd

F +44 (0)207 681 2580

T +44 (0)208 223 3081

W <http://www.stjohnslabs.com/>

E info@stjohnslabs.com