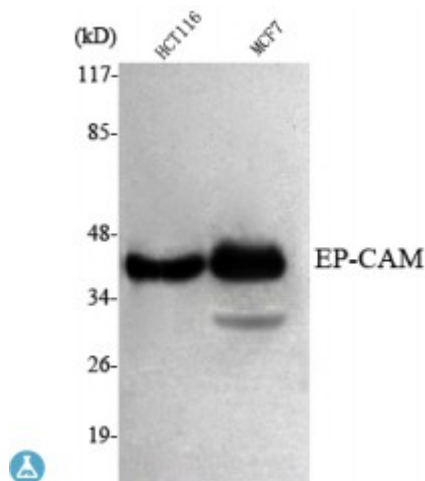


Anti-EP-CAM antibody



Description	Mouse monoclonal to EP-CAM.
Model	STJ98490
Host	Mouse
Reactivity	Human, Mouse
Applications	WB
Immunogen	Purified recombinant human EP-CAM (N-terminal) protein fragments expressed in E.coli.
Immunogen Region	N-terminal
Gene ID	4072
Gene Symbol	EPCAM
Dilution range	WB 1:1000-1:2000
Specificity	EP-CAM Monoclonal Antibody detects endogenous levels of EP-CAM protein.
Tissue Specificity	Highly and selectively expressed by undifferentiated rather than differentiated embryonic stem cells (ESC). Levels rapidly diminish as soon as ESC's differentiate (at protein levels). Expressed in almost all epithelial cell membranes but not on mesodermal or neural cell membranes. Found on the surface of adenocarcinoma.
Purification	Affinity purification
Note	For Research Use Only (RUO).
Protein Name	Epithelial cell adhesion molecule Ep-CAM Adenocarcinoma-associated

antigen Cell surface glycoprotein Trop-1 Epithelial cell surface antigen
Epithelial glycoprotein EGP Epithelial glycoprotein 314 EGP314