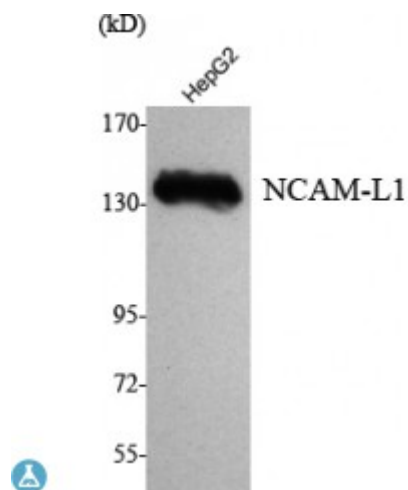


Anti-NCAM-L1 antibody



Description	Mouse monoclonal to NCAM-L1.
Model	STJ98519
Host	Mouse
Reactivity	Canine, Human, Mouse, Rabbit, Rat
Applications	WB
Immunogen	Purified recombinant human NCAM-L1 (N-terminal) protein fragments expressed in E.coli.
Immunogen Region	N-terminal
Gene ID	3897
Gene Symbol	L1CAM
Dilution range	WB 1:1000-1:2000
Specificity	NCAM-L1 Monoclonal Antibody detects endogenous levels of NCAM-L1 protein.
Purification	Affinity purification
Note	For Research Use Only (RUO).
Protein Name	Neural cell adhesion molecule L1 N-CAM-L1 NCAM-L1 CD antigen CD171
Clonality	Monoclonal
Conjugation	Unconjugated
Formulation	Purified mouse monoclonal in buffer containing 0.1M Tris-Glycine (pH 7.4, 150 mM NaCl) with 0.2% sodium azide, 50% glycerol.

Concentration	1 mg/ml
Storage Instruction	Store at -20°C, and avoid repeat freeze-thaw cycles.
Database Links	HGNC:64700MIM:303350
Alternative Names	Neural cell adhesion molecule L1 N-CAM-L1 NCAM-L1 CD antigen CD171
Function	Neural cell adhesion molecule involved in the dynamics of cell adhesion and in the generation of transmembrane signals at tyrosine kinase receptors. During brain development, critical in multiple processes, including neuronal migration, axonal growth and fasciculation, and synaptogenesis. In the mature brain, plays a role in the dynamics of neuronal structure and function, including synaptic plasticity.
Cellular Localization	Cell membrane Cell projection, growth cone Cell projection, axon Cell projection, dendrite. Colocalized with SHTN1 in close apposition with actin filaments in filopodia and lamellipodia of axonal growth cones of hippocampal neurons . In neurons, detected predominantly in axons and cell body, weak localization to dendrites .

St John's Laboratory Ltd

F +44 (0)207 681 2580

T +44 (0)208 223 3081

W <http://www.stjohnslabs.com/>

E info@stjohnslabs.com