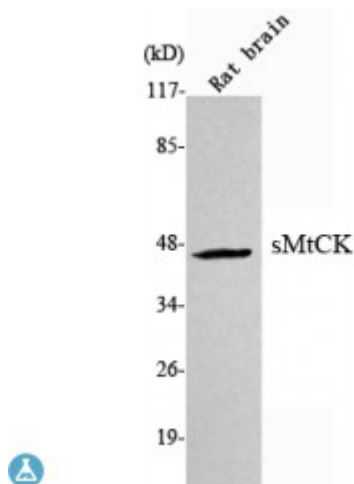


Anti-sMtCK antibody



Description	Mouse monoclonal to sMtCK.
Model	STJ98553
Host	Mouse
Reactivity	Canine, Human, Mouse, Rabbit, Rat, Swine
Applications	WB
Immunogen	Purified recombinant human sMtCK protein fragments expressed in E.coli.
Gene ID	1160
Gene Symbol	CKMT2
Dilution range	WB 1:1000-1:2000
Specificity	sMtCK Monoclonal Antibody detects endogenous levels of sMtCK protein.
Tissue Specificity	Sarcomere-specific. Found only in heart and skeletal muscles.
Purification	Affinity purification
Note	For Research Use Only (RUO).
Protein Name	Creatine kinase S-type, mitochondrial Basic-type mitochondrial creatine kinase Mib-CK Sarcomeric mitochondrial creatine kinase S-MtCK
Clonality	Monoclonal
Conjugation	Unconjugated
Formulation	Purified mouse monoclonal in buffer containing 0.1M Tris-Glycine (pH 7.4, 150 mM NaCl) with 0.2% sodium azide, 50% glycerol.

Concentration	1 mg/ml
Storage Instruction	Store at -20°C, and avoid repeat freeze-thaw cycles.
Database Links	HGNC:1996OMIM:123295
Alternative Names	Creatine kinase S-type, mitochondrial Basic-type mitochondrial creatine kinase Mib-CK Sarcomeric mitochondrial creatine kinase S-MtCK
Function	Reversibly catalyzes the transfer of phosphate between ATP and various phosphogens (e.g. creatine phosphate). Creatine kinase isoenzymes play a central role in energy transduction in tissues with large, fluctuating energy demands, such as skeletal muscle, heart, brain and spermatozoa.
Cellular Localization	Mitochondrion inner membrane. Peripheral membrane protein. Intermembrane side.

St John's Laboratory Ltd

F +44 (0)207 681 2580

T +44 (0)208 223 3081

W <http://www.stjohnslabs.com/>

E info@stjohnslabs.com