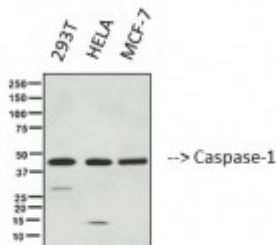


## Anti-Caspase-1 antibody



Western Blot (WB) analysis of 1. 293T 2. HELA 3. MCF-7 cells using Caspase-1 Polyclonal Antibody. (STJ98574)



### Description

Caspase-1 is a protein encoded by the CASP1 gene which is approximately 45,1 kDa. Caspase-1 is localised to the cytoplasm. It is involved in amyotrophic lateral sclerosis, toll-like receptor signalling pathways, p53 signalling and the TNFR1 pathway. This protein falls under the the cysteine-aspartic acid protease family. upon activation It plays a central role in the execution-phase of cell apoptosis. These enzymes can be divided into initiators and effectors. The initiator isoforms are activated by, and interact with, upstream adaptor molecules. Caspase-1 is expressed mainly in the spleen and lung. Mutations in the CASP1 gene may result in shigellosis and cowpox. STJ98574 was affinity-purified from rabbit antiserum by affinity-chromatography using epitope-specific immunogen. This polyclonal antibody detects endogenous levels of Caspase-1.

<b>Model</b>	STJ98574
<b>Host</b>	Rabbit
<b>Reactivity</b>	Human, Rat
<b>Applications</b>	ELISA, WB
<b>Immunogen</b>	Synthesized peptide derived from Caspase-1
<b>Immunogen Region</b>	Internal
<b>Gene ID</b>	<a href="#">834</a>
<b>Gene Symbol</b>	<a href="#">CASP1</a>
<b>Dilution range</b>	WB 1:500-2000ELISA 1:10000-20000
<b>Specificity</b>	Caspase-1 Polyclonal Antibody detects endogenous levels of Caspase-1
<b>Tissue Specificity</b>	Expressed in larger amounts in spleen and lung. Detected in liver, heart, small

intestine, colon, thymus, prostate, skeletal muscle, peripheral blood leukocytes, kidney and testis. No expression in the brain.

<b>Purification</b>	The antibody was affinity-purified from rabbit antiserum by affinity-chromatography using epitope-specific immunogen.
<b>Note</b>	For Research Use Only (RUO).
<b>Protein Name</b>	Caspase-1 CASP-1 Interleukin-1 beta convertase IL-1BC Interleukin-1 beta-converting enzyme ICE IL-1 beta-converting enzyme p45 Caspase-1 subunit p20 Caspase-1 subunit p10
<b>Clonality</b>	Polyclonal
<b>Conjugation</b>	Unconjugated
<b>Isotype</b>	IgG
<b>Formulation</b>	Liquid in PBS containing 50% glycerol, 0.5% BSA and 0.02% sodium azide.
<b>Concentration</b>	1 mg/ml
<b>Storage Instruction</b>	Store at -20°C, and avoid repeat freeze-thaw cycles.
<b>Database Links</b>	<a href="https://www.ncbi.nlm.nih.gov/condensedcode/HGNC:14990MIM:147678">HGNC:14990MIM:147678</a>
<b>Alternative Names</b>	Caspase-1 CASP-1 Interleukin-1 beta convertase IL-1BC Interleukin-1 beta-converting enzyme ICE IL-1 beta-converting enzyme p45 Caspase-1 subunit p20 Caspase-1 subunit p10
<b>Function</b>	Thiol protease that cleaves IL-1 beta between an Asp and an Ala, releasing the mature cytokine which is involved in a variety of inflammatory processes. Important for defense against pathogens. Cleaves and activates sterol regulatory element binding proteins (SREBPs). Can also promote apoptosis. Upon inflammasome activation, during DNA virus infection but not RNA virus challenge, controls antiviral immunity through the cleavage of MB21D1/cGAS, rendering it inactive .
<b>Cellular Localization</b>	Cytoplasm.
<b>Post-translational Modifications</b>	The two subunits are derived from the precursor sequence by an autocatalytic mechanism.