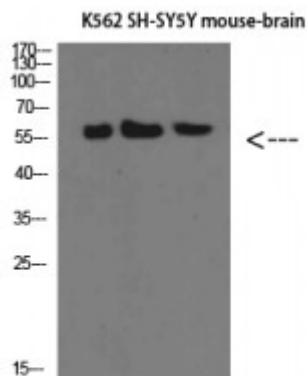


Anti-E-Selectin antibody



Description	Rabbit polyclonal to E-Selectin.
Model	STJ98576
Host	Rabbit
Reactivity	Human, Mouse
Applications	ELISA, IHC, WB
Immunogen	Synthesized peptide derived from E-Selectin
Immunogen Region	Internal
Gene ID	6401
Gene Symbol	SELE
Dilution range	WB 1:500-2000ELISA 1:10000-20000, IHC 1:50-1:300
Specificity	E-Selectin Polyclonal Antibody detects endogenous levels of E-Selectin
Purification	The antibody was affinity-purified from rabbit antiserum by affinity-chromatography using epitope-specific immunogen.
Note	For Research Use Only (RUO).
Protein Name	E-selectin CD62 antigen-like family member E Endothelial leukocyte adhesion molecule 1 ELAM-1 Leukocyte-endothelial cell adhesion molecule 2 LECAM2 CD antigen CD62E
Clonality	Polyclonal
Conjugation	Unconjugated
Isotype	IgG

Formulation	Liquid in PBS containing 50% glycerol, 0.5% BSA and 0.02% sodium azide.
Concentration	1 mg/ml
Storage Instruction	Store at -20°C, and avoid repeat freeze-thaw cycles.
Database Links	HGNC:10718OMIM:131210
Alternative Names	E-selectin CD62 antigen-like family member E Endothelial leukocyte adhesion molecule 1 ELAM-1 Leukocyte-endothelial cell adhesion molecule 2 LECAM2 CD antigen CD62E
Function	Cell-surface glycoprotein having a role in immunoadhesion. Mediates in the adhesion of blood neutrophils in cytokine-activated endothelium through interaction with PSGL1/SELPLG. May have a role in capillary morphogenesis.
Cellular Localization	Cell membrane {ECO:0000269 PubMed:12649084}. Single-pass type I membrane protein.

St John's Laboratory Ltd

F +44 (0)207 681 2580

T +44 (0)208 223 3081

W <http://www.stjohnslabs.com/>

E info@stjohnslabs.com