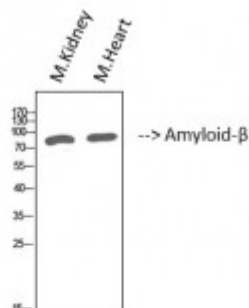


## Anti-Amyloid-beta antibody



Western Blot (WB) analysis of 1. Mouse kidney 2. Mouse heart cells using Amyloid-beta Polyclonal Antibody. (STJ98585)



### Description

Amyloid-beta is a protein encoded by the APP gene which is approximately 86,9 kDa. Amyloid-beta is localised to the cell membrane. It is involved in activated TLR4 signalling, peptide ligand-binding receptors and A-beta pathways including plaque formation and APP metabolism. It functions as a cell surface receptor that performs physiological functions on the surface of neurons relevant to neurite growth, neuronal adhesion and axonogenesis. It plays a role in cell mobility and transcription regulation through protein-protein interactions. Amyloid-beta is expressed in the cerebrospinal fluid, brain, liver and all foetal tissues. Mutations in the APP gene may be implicated in Alzheimer disease. STJ98585 was affinity-purified from rabbit antiserum by affinity-chromatography using epitope-specific immunogen. This primary antibody detects endogenous levels of Amyloid-beta.

<b>Model</b>	STJ98585
<b>Host</b>	Rabbit
<b>Reactivity</b>	Human, Mouse, Rat
<b>Applications</b>	ELISA, WB
<b>Immunogen</b>	Synthesized peptide derived from Amyloid-beta
<b>Immunogen Region</b>	221-270 aa
<b>Gene ID</b>	<a href="#">351</a>
<b>Gene Symbol</b>	<a href="#">APP</a>
<b>Dilution range</b>	WB 1:500-2000ELISA 1:10000-20000
<b>Specificity</b>	Amyloid-beta Polyclonal Antibody detects endogenous levels of Amyloid-

beta

**Tissue Specificity**

Expressed in all fetal tissues examined with highest levels in brain, kidney, heart and spleen. Weak expression in liver. In adult brain, highest expression found in the frontal lobe of the cortex and in the anterior perisylvian cortex-opercular gyri. Moderate expression in the cerebellar cortex, the posterior perisylvian cortex-opercular gyri and the temporal associated cortex. Weak expression found in the striate, extra-striate and motor cortices. Expressed in cerebrospinal fluid, and plasma. Isoform APP

**Purification**

The antibody was affinity-purified from rabbit antiserum by affinity-chromatography using epitope-specific immunogen.

**Note**

For Research Use Only (RUO).

**Protein Name**

Amyloid-beta A4 protein ABPP APPI APP Alzheimer disease amyloid protein Amyloid precursor protein Amyloid-beta precursor protein Cerebral vascular amyloid peptide CVAP PreA4 Protease nexin-II