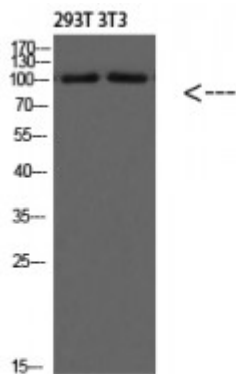


Anti-PI 3 Kinase Class 3 antibody



Description	Rabbit polyclonal to PI 3 Kinase Class 3.
Model	STJ98590
Host	Rabbit
Reactivity	Bovine, Human, Mouse, Rat, Swine
Applications	ELISA, WB
Immunogen	Synthesized peptide derived from synthetic peptide derived from PI 3 Kinase Class 3.
Gene ID	5289
Gene Symbol	PIK3C3
Dilution range	WB 1:500-2000ELISA 1:10000-20000
Specificity	PI 3 Kinase Class 3 Polyclonal Antibody detects endogenous levels of PI 3 Kinase Class 3
Tissue Specificity	Ubiquitously expressed, with a highest expression in skeletal muscle.
Purification	The antibody was affinity-purified from rabbit antiserum by affinity-chromatography using epitope-specific immunogen.
Note	For Research Use Only (RUO).
Protein Name	Phosphatidylinositol 3-kinase catalytic subunit type 3 PI3-kinase type 3 PI3K type 3 PtdIns-3-kinase type 3 Phosphatidylinositol 3-kinase p100 subunit Phosphoinositide-3-kinase class 3 hVps34
Clonality	Polyclonal

Conjugation	Unconjugated
Isotype	IgG
Formulation	Liquid in PBS containing 50% glycerol, 0.5% BSA and 0.02% sodium azide.
Concentration	1 mg/ml
Storage Instruction	Store at -20°C, and avoid repeat freeze-thaw cycles.
Database Links	HGNC:8974OMIM:602609
Alternative Names	Phosphatidylinositol 3-kinase catalytic subunit type 3 PI3-kinase type 3 PI3K type 3 PtdIns-3-kinase type 3 Phosphatidylinositol 3-kinase p100 subunit Phosphoinositide-3-kinase class 3 hVps34
Function	Catalytic subunit of the PI3K complex that mediates formation of phosphatidylinositol 3-phosphate; different complex forms are believed to play a role in multiple membrane trafficking pathways: PI3KC3-C1 is involved in initiation of autophagosomes and PI3KC3-C2 in maturation of autophagosomes and endocytosis. Involved in regulation of degradative endocytic trafficking and required for the abscission step in cytokinesis, probably in the context of PI3KC3-C2 . Involved in the transport of lysosomal enzyme precursors to lysosomes. Required for transport from early to late endosomes .
Cellular Localization	Midbody Late endosome Cytoplasmic vesicle, autophagosome. As component of the PI3K complex I localized to pre-autophagosome structures. As component of the PI3K complex II localized predominantly to endosomes (Probable). Localizes also to discrete punctae along the ciliary axoneme and to the base of the ciliary axoneme .