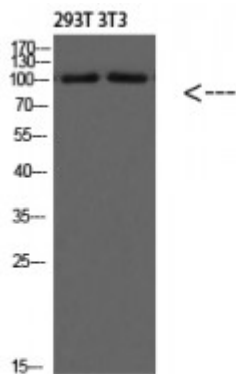


## Anti-PI 3 Kinase Class 3 antibody



<b>Description</b>	Rabbit polyclonal to PI 3 Kinase Class 3.
<b>Model</b>	STJ98590
<b>Host</b>	Rabbit
<b>Reactivity</b>	Bovine, Human, Mouse, Rat, Swine
<b>Applications</b>	ELISA, WB
<b>Immunogen</b>	Synthesized peptide derived from synthetic peptide derived from PI 3 Kinase Class 3.
<b>Gene ID</b>	<a href="#">5289</a>
<b>Gene Symbol</b>	<a href="#">PIK3C3</a>
<b>Dilution range</b>	WB 1:500-2000ELISA 1:10000-20000
<b>Specificity</b>	PI 3 Kinase Class 3 Polyclonal Antibody detects endogenous levels of PI 3 Kinase Class 3
<b>Tissue Specificity</b>	Ubiquitously expressed, with a highest expression in skeletal muscle.
<b>Purification</b>	The antibody was affinity-purified from rabbit antiserum by affinity-chromatography using epitope-specific immunogen.
<b>Note</b>	For Research Use Only (RUO).
<b>Protein Name</b>	Phosphatidylinositol 3-kinase catalytic subunit type 3 PI3-kinase type 3 PI3K type 3 PtdIns-3-kinase type 3 Phosphatidylinositol 3-kinase p100 subunit Phosphoinositide-3-kinase class 3 hVps34
<b>Clonality</b>	Polyclonal

<b>Conjugation</b>	Unconjugated
<b>Isotype</b>	IgG
<b>Formulation</b>	Liquid in PBS containing 50% glycerol, 0.5% BSA and 0.02% sodium azide.
<b>Concentration</b>	1 mg/ml
<b>Storage Instruction</b>	Store at -20°C, and avoid repeat freeze-thaw cycles.
<b>Database Links</b>	<a href="https://www.ncbi.nlm.nih.gov/condensedbook/condensedbook.cgi?acc=HGNC:8974OMIM:602609">HGNC:8974OMIM:602609</a>
<b>Alternative Names</b>	Phosphatidylinositol 3-kinase catalytic subunit type 3 PI3-kinase type 3 PI3K type 3 PtdIns-3-kinase type 3 Phosphatidylinositol 3-kinase p100 subunit Phosphoinositide-3-kinase class 3 hVps34
<b>Function</b>	Catalytic subunit of the PI3K complex that mediates formation of phosphatidylinositol 3-phosphate; different complex forms are believed to play a role in multiple membrane trafficking pathways: PI3KC3-C1 is involved in initiation of autophagosomes and PI3KC3-C2 in maturation of autophagosomes and endocytosis. Involved in regulation of degradative endocytic trafficking and required for the abscission step in cytokinesis, probably in the context of PI3KC3-C2 . Involved in the transport of lysosomal enzyme precursors to lysosomes. Required for transport from early to late endosomes .
<b>Cellular Localization</b>	Midbody Late endosome Cytoplasmic vesicle, autophagosome. As component of the PI3K complex I localized to pre-autophagosome structures. As component of the PI3K complex II localized predominantly to endosomes (Probable). Localizes also to discrete punctae along the ciliary axoneme and to the base of the ciliary axoneme .