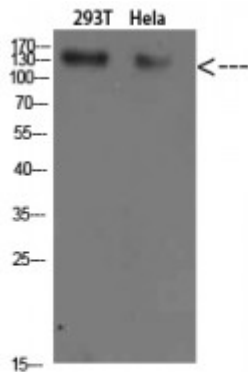


Anti-Collagen I antibody



Description	Rabbit polyclonal to Collagen I.
Model	STJ98600
Host	Rabbit
Reactivity	Human, Mouse, Rat
Applications	ELISA, WB
Immunogen	Synthesized peptide derived from Collagen I
Immunogen Region	1200-1217 aa
Gene ID	1278
Gene Symbol	COL1A2
Dilution range	WB 1:500-2000ELISA 1:10000-20000
Specificity	Collagen I Polyclonal Antibody detects endogenous levels of Collagen I
Tissue Specificity	Forms the fibrils of tendon, ligaments and bones. In bones the fibrils are mineralized with calcium hydroxyapatite.
Purification	The antibody was affinity-purified from rabbit antiserum by affinity-chromatography using epitope-specific immunogen.
Note	For Research Use Only (RUO).
Protein Name	Collagen alpha-2 I chain Alpha-2 type I collagen
Clonality	Polyclonal
Conjugation	Unconjugated

Isotype	IgG
Formulation	Liquid in PBS containing 50% glycerol, 0.5% BSA and 0.02% sodium azide.
Concentration	1 mg/ml
Storage Instruction	Store at -20°C, and avoid repeat freeze-thaw cycles.
Database Links	HGNC:2198OMIM:120160
Alternative Names	Collagen alpha-2 I chain Alpha-2 type I collagen
Function	Type I collagen is a member of group I collagen (fibrillar forming collagen).
Sequence and Domain Family	The C-terminal propeptide, also known as COLFI domain, have crucial roles in tissue growth and repair by controlling both the intracellular assembly of procollagen molecules and the extracellular assembly of collagen fibrils. It binds a calcium ion which is essential for its function.
Cellular Localization	Secreted, extracellular space, extracellular matrix
Post-translational Modifications	Prolines at the third position of the tripeptide repeating unit (G-X-Y) are hydroxylated in some or all of the chains.

St John's Laboratory Ltd

F +44 (0)207 681 2580

T +44 (0)208 223 3081

W <http://www.stjohnslabs.com/>

E info@stjohnslabs.com