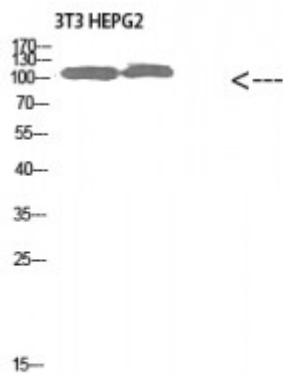


## Anti-Collagen alpha-1(XXVIII) antibody



<b>Description</b>	Rabbit polyclonal to Collagen alpha-1(XXVIII).
<b>Model</b>	STJ98615
<b>Host</b>	Rabbit
<b>Reactivity</b>	Human, Mouse
<b>Applications</b>	ELISA, WB
<b>Immunogen</b>	Synthesized peptide derived from Collagen alpha-1 (XXVIII)
<b>Immunogen Region</b>	111-160 aa
<b>Gene ID</b>	<a href="#">340267</a>
<b>Gene Symbol</b>	<a href="#">COL28A1</a>
<b>Dilution range</b>	WB 1:500-2000ELISA 1:10000-20000
<b>Specificity</b>	Collagen alpha-1(XXVIII)Polyclonal Antibody detects endogenous levels of Collagen alpha-1(XXVIII)Polyclonal Antibody
<b>Purification</b>	The antibody was affinity-purified from rabbit antiserum by affinity-chromatography using epitope-specific immunogen.
<b>Note</b>	For Research Use Only (RUO).
<b>Protein Name</b>	Collagen alpha-1 XXVIII chain
<b>Clonality</b>	Polyclonal
<b>Conjugation</b>	Unconjugated
<b>Isotype</b>	IgG

<b>Formulation</b>	Liquid in PBS containing 50% glycerol, 0.5% BSA and 0.02% sodium azide.
<b>Concentration</b>	1 mg/ml
<b>Storage Instruction</b>	Store at -20°C, and avoid repeat freeze-thaw cycles.
<b>Database Links</b>	<a href="#">HGNC:22442OMIM:609996</a>
<b>Alternative Names</b>	Collagen alpha-1 XXVIII chain
<b>Function</b>	May act as a cell-binding protein.
<b>Cellular Localization</b>	Secreted, extracellular space, extracellular matrix, basement membrane

---

**St John's Laboratory Ltd**

**F** +44 (0)207 681 2580

**T** +44 (0)208 223 3081

**W** <http://www.stjohnslabs.com/>

**E** [info@stjohnslabs.com](mailto:info@stjohnslabs.com)