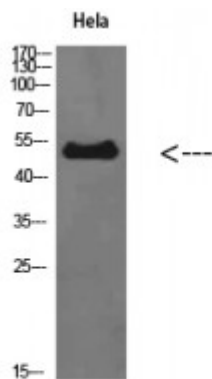


Anti-ETBR antibody



Description	Rabbit polyclonal to ETBR.
Model	STJ98617
Host	Rabbit
Reactivity	Human
Applications	ELISA, WB
Immunogen	Synthesized peptide derived from ETBR
Immunogen Region	31-80 aa
Gene ID	1910
Gene Symbol	EDNRB
Dilution range	WB 1:500-2000ELISA 1:10000-20000
Specificity	ETBR Polyclonal Antibody detects endogenous levels of ETBR
Tissue Specificity	Expressed in placental stem villi vessels, but not in cultured placental villi smooth muscle cells.
Purification	The antibody was affinity-purified from rabbit antiserum by affinity-chromatography using epitope-specific immunogen.
Note	For Research Use Only (RUO).
Protein Name	Endothelin receptor type B ET-B ET-BR Endothelin receptor non-selective type
Clonality	Polyclonal
Conjugation	Unconjugated

Isotype	IgG
Formulation	Liquid in PBS containing 50% glycerol, 0.5% BSA and 0.02% sodium azide.
Concentration	1 mg/ml
Storage Instruction	Store at -20°C, and avoid repeat freeze-thaw cycles.
Database Links	HGNC:3180OMIM:131244
Alternative Names	Endothelin receptor type B ET-B ET-BR Endothelin receptor non-selective type
Function	Non-specific receptor for endothelin 1, 2, and 3. Mediates its action by association with G proteins that activate a phosphatidylinositol-calcium second messenger system.
Cellular Localization	Cell membrane
Post-translational Modifications	Palmitoylation of Cys-402 was confirmed by the palmitoylation of Cys-402 in a deletion mutant lacking both Cys-403 and Cys-405.

St John's Laboratory Ltd

F +44 (0)207 681 2580

T +44 (0)208 223 3081

W <http://www.stjohnslabs.com/>

E info@stjohnslabs.com