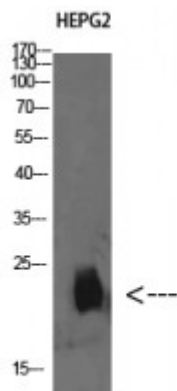


Anti-Plasminogen receptor antibody



Description	Rabbit polyclonal to Plasminogen receptor.
Model	STJ98632
Host	Rabbit
Reactivity	Human, Rat
Applications	ELISA, WB
Immunogen	Synthesized peptide derived from Plasminogen receptor
Immunogen Region	1-50 aa
Gene ID	55848
Gene Symbol	PLGRKT
Dilution range	WB 1:500-2000ELISA 1:10000-20000
Specificity	Plasminogen receptor Polyclonal Antibody detects endogenous levels of Plasminogen receptor
Tissue Specificity	Expressed in peripheral blood cells and monocytes. Expressed in adrenal medulla.
Purification	The antibody was affinity-purified from rabbit antiserum by affinity-chromatography using epitope-specific immunogen.
Note	For Research Use Only (RUO).
Protein Name	Plasminogen receptor KT Plg-R KT
Clonality	Polyclonal
Conjugation	Unconjugated

Isotype	IgG
Formulation	Liquid in PBS containing 50% glycerol, 0.5% BSA and 0.02% sodium azide.
Concentration	1 mg/ml
Storage Instruction	Store at -20°C, and avoid repeat freeze-thaw cycles.
Database Links	HGNC:23633 OMIM:NA
Alternative Names	Plasminogen receptor KT Plg-R KT
Function	Receptor for plasminogen. Regulates urokinase plasminogen activator-dependent and stimulates tissue-type plasminogen activator-dependent cell surface plasminogen activation. Proposed to be part of a local catecholaminergic cell plasminogen activation system that regulates neuroendocrine prohormone processing. Involved in regulation of inflammatory response; regulates monocyte chemotactic migration and matrix metalloproteinase activation, such as of MMP2 and MMP9.
Cellular Localization	Cell membrane. Colocalizes on the cell surface with urokinase plasminogen activator surface receptor/PLAUR.