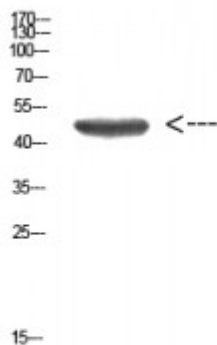


Anti-Cytokeratin 14/17 antibody



Description	Rabbit polyclonal to Cytokeratin 14/17.
Model	STJ98650
Host	Rabbit
Reactivity	Human, Mouse, Rat
Applications	ELISA, WB
Immunogen	Synthetic peptide from AA range: 261-310.
Immunogen Region	261-310 aa
Gene ID	3861
Gene Symbol	KRT14
Dilution range	WB 1:5000-10000ELISA 1:10000
Specificity	The antibody detects endogenous Cytokeratin 14/17 protein
Tissue Specificity	Detected in the basal layer, lowered within the more apically located layers specifically in the stratum spinosum, stratum granulosum but is not detected in stratum corneum. Strongly expressed in the outer root sheath of anagen follicles but not in the germinative matrix, inner root sheath or hair. Found in keratinocytes surrounding the club hair during telogen.
Purification	The antibody was affinity-purified from rabbit serum by affinity-chromatography using specific immunogen.
Note	For Research Use Only (RUO).
Protein Name	Keratin, type I cytoskeletal 14 Cytokeratin-14 CK-14 Keratin-14 K14

Clonality	Polyclonal
Conjugation	Unconjugated
Isotype	IgG
Formulation	PBS, pH 7.4, containing 0.02% sodium azide as Preservative and 50% Glycerol.
Concentration	1 mg/ml
Storage Instruction	Store at -20°C, and avoid repeat freeze-thaw cycles.
Database Links	HGNC:6416OMIM:125595
Alternative Names	Keratin, type I cytoskeletal 14 Cytokeratin-14 CK-14 Keratin-14 K14
Function	The nonhelical tail domain is involved in promoting KRT5-KRT14 filaments to self-organize into large bundles and enhances the mechanical properties involved in resilience of keratin intermediate filaments in vitro.
Cellular Localization	Cytoplasm. Nucleus. Expressed in both as a filamentous pattern.
Post-translational Modifications	A disulfide bond is formed between rather than within filaments and promotes the formation of a keratin filament cage around the nucleus.; Ubiquitinated by the BCR(KLHL24) E3 ubiquitin ligase complex.

St John's Laboratory Ltd

F +44 (0)207 681 2580

T +44 (0)208 223 3081

W <http://www.stjohnslabs.com/>

E info@stjohnslabs.com