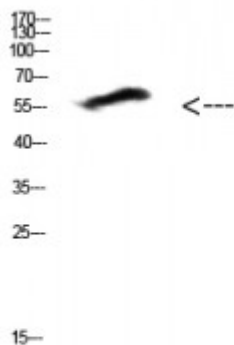


Anti-COL25A1 antibody



Description	Rabbit polyclonal to COL25A1.
Model	STJ98655
Host	Rabbit
Reactivity	Human, Mouse
Applications	ELISA, WB
Immunogen	Synthetic peptide from AA range: 101-150.
Immunogen Region	101-150 aa
Gene ID	84570
Gene Symbol	COL25A1
Dilution range	WB 1:5000-10000ELISA 1:10000
Specificity	The antibody detects endogenous COL25A1 protein
Tissue Specificity	Expressed predominantly in brain. Deposited preferentially in primitive or neuritic amyloid plaques which are typical of Alzheimer disease.
Purification	The antibody was affinity-purified from rabbit serum by affinity-chromatography using specific immunogen.
Note	For Research Use Only (RUO).
Protein Name	Collagen alpha-1 XXV chain Alzheimer disease amyloid-associated protein AMY CLAC-P Collagen-like Alzheimer amyloid plaque component CLAC
Clonality	Polyclonal
Conjugation	Unconjugated

Isotype	IgG
Formulation	PBS, pH 7.4, containing 0.02% sodium azide as Preservative and 50% Glycerol.
Concentration	1 mg/ml
Storage Instruction	Store at -20°C, and avoid repeat freeze-thaw cycles.
Database Links	HGNC:18603OMIM:610004
Alternative Names	Collagen alpha-1 XXV chain Alzheimer disease amyloid-associated protein AMY CLAC-P Collagen-like Alzheimer amyloid plaque component CLAC
Function	Inhibits fibrillization of beta amyloid peptide during the elongation phase. Has also been shown to assemble amyloid fibrils into protease-resistant aggregates. Binds heparin.
Cellular Localization	Membrane. After proteolytic cleavage, CLAC is secreted.
Post-translational Modifications	Undergoes proteolytic cleavage by furin protease to yield the soluble collagen-like Alzheimer amyloid plaque component. Glycosylated. Hydroxylated on 11% of proline residues and 49% of lysine residues.

St John's Laboratory Ltd

F +44 (0)207 681 2580

T +44 (0)208 223 3081

W <http://www.stjohnslabs.com/>

E info@stjohnslabs.com