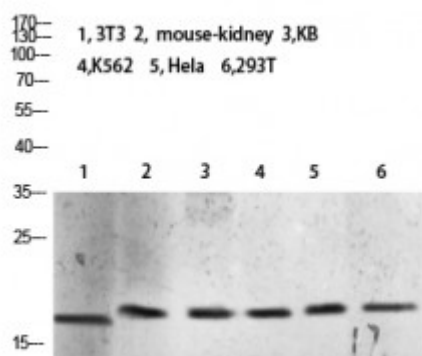


Anti-Tri-Methyl-Histone H3 antibody



Description	Rabbit polyclonal to Tri-Methyl-Histone H3.
Model	STJ98695
Host	Rabbit
Reactivity	Human, Mouse, Rat
Applications	ELISA, WB
Immunogen	Synthetic Tri-Methyl peptide from human Tri-Methyl-Histone H3 protein.
Immunogen Region	10 aa
Gene ID	8350
Gene Symbol	HIST1H3A HIST1H3B HIST1H3C HIST1H3D HIST1H3E HIST1H3F HIST1H3G HIST1H3H HIST1H3I HIST1H3J
Dilution range	WB 1:500-2000ELISA 1:5000-20000
Specificity	The antibody detects endogenous Tri-Methyl-Histone H3 (K10).
Purification	The antibody was affinity-purified from rabbit serum by affinity-chromatography using specific immunogen.
Note	For Research Use Only (RUO).
Protein Name	Histone H3.1 Histone H3/a Histone H3/b Histone H3/c Histone H3/d Histone H3/f Histone H3/h Histone H3/i Histone H3/j Histone H3/k Histone H3/l
Molecular Weight	15kDa
Clonality	Polyclonal
Conjugation	Unconjugated

Isotype	IgG
Formulation	PBS, pH 7.4, containing 0.02% sodium azide as Preservative and 50% Glycerol.
Concentration	1 mg/ml
Storage Instruction	Store at -20°C, and avoid repeat freeze-thaw cycles.
Database Links	HGNC:4766OMIM:137800
Alternative Names	Histone H3.1 Histone H3/a Histone H3/b Histone H3/c Histone H3/d Histone H3/f Histone H3/h Histone H3/i Histone H3/j Histone H3/k Histone H3/l

St John's Laboratory Ltd

F +44 (0)207 681 2580

T +44 (0)208 223 3081

W <http://www.stjohnslabs.com/>

E info@stjohnslabs.com