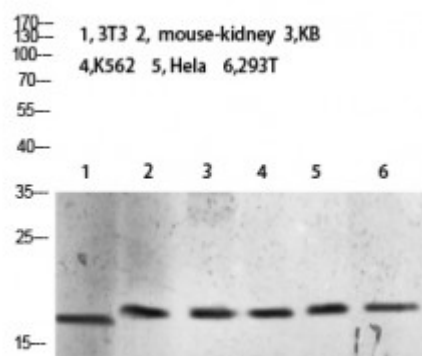


## Anti-Tri-Methyl-Histone H3 antibody



<b>Description</b>	Rabbit polyclonal to Tri-Methyl-Histone H3.
<b>Model</b>	STJ98695
<b>Host</b>	Rabbit
<b>Reactivity</b>	Human, Mouse, Rat
<b>Applications</b>	ELISA, WB
<b>Immunogen</b>	Synthetic Tri-Methyl peptide from human Tri-Methyl-Histone H3 protein.
<b>Immunogen Region</b>	10 aa
<b>Gene ID</b>	<a href="#">8350</a>
<b>Gene Symbol</b>	<a href="#">HIST1H3A</a> <a href="#">HIST1H3B</a> <a href="#">HIST1H3C</a> <a href="#">HIST1H3D</a> <a href="#">HIST1H3E</a> <a href="#">HIST1H3F</a> <a href="#">HIST1H3G</a> <a href="#">HIST1H3H</a> <a href="#">HIST1H3I</a> <a href="#">HIST1H3J</a>
<b>Dilution range</b>	WB 1:500-2000ELISA 1:5000-20000
<b>Specificity</b>	The antibody detects endogenous Tri-Methyl-Histone H3 (K10).
<b>Purification</b>	The antibody was affinity-purified from rabbit serum by affinity-chromatography using specific immunogen.
<b>Note</b>	For Research Use Only (RUO).
<b>Protein Name</b>	Histone H3.1 Histone H3/a Histone H3/b Histone H3/c Histone H3/d Histone H3/f Histone H3/h Histone H3/i Histone H3/j Histone H3/k Histone H3/l
<b>Molecular Weight</b>	15kDa
<b>Clonality</b>	Polyclonal
<b>Conjugation</b>	Unconjugated

<b>Isotype</b>	IgG
<b>Formulation</b>	PBS, pH 7.4, containing 0.02% sodium azide as Preservative and 50% Glycerol.
<b>Concentration</b>	1 mg/ml
<b>Storage Instruction</b>	Store at -20°C, and avoid repeat freeze-thaw cycles.
<b>Database Links</b>	<a href="#">HGNC:4766OMIM:137800</a>
<b>Alternative Names</b>	Histone H3.1 Histone H3/a Histone H3/b Histone H3/c Histone H3/d Histone H3/f Histone H3/h Histone H3/i Histone H3/j Histone H3/k Histone H3/l

---

**St John's Laboratory Ltd**

**F** +44 (0)207 681 2580

**T** +44 (0)208 223 3081

**W** <http://www.stjohnslabs.com/>

**E** [info@stjohnslabs.com](mailto:info@stjohnslabs.com)