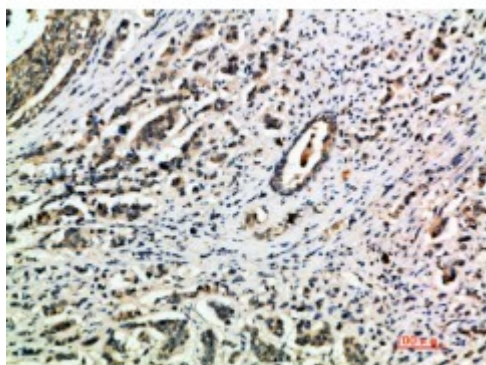


Anti-Integrin alpha antibody



Description	Rabbit polyclonal to Integrin alpha1.
Model	STJ98709
Host	Rabbit
Reactivity	Human
Applications	ELISA, IHC
Immunogen	Synthetic peptide from human Integrin alpha1 protein.
Immunogen Region	920-980 aa
Gene ID	3672
Gene Symbol	ITGA1
Dilution range	IHC-P 1:50-300ELISA 1:5000-20000
Specificity	The antibody detects endogenous Integrin alpha1.
Purification	The antibody was affinity-purified from rabbit serum by affinity-chromatography using specific immunogen.
Note	For Research Use Only (RUO).
Protein Name	Integrin alpha-1 CD49 antigen-like family member A Laminin and collagen receptor VLA-1 CD antigen CD49a
Clonality	Polyclonal
Conjugation	Unconjugated
Isotype	IgG

Formulation	PBS, pH 7.4, containing 0.02% sodium azide as Preservative and 50% Glycerol.
Concentration	1 mg/ml
Storage Instruction	Store at -20°C, and avoid repeat freeze-thaw cycles.
Database Links	HGNC:6134 OMIM:192968
Alternative Names	Integrin alpha-1 CD49 antigen-like family member A Laminin and collagen receptor VLA-1 CD antigen CD49a
Function	Integrin alpha-1/beta-1 is a receptor for laminin and collagen. It recognizes the proline-hydroxylated sequence G-F-P-G-E-R in collagen. Involved in anchorage-dependent, negative regulation of EGF-stimulated cell growth.
Sequence and Domain Family	The integrin I-domain (insert) is a VWFA domain. Integrins with I-domains do not undergo protease cleavage.
Cellular Localization	Membrane. Single-pass type I membrane protein.

St John's Laboratory Ltd

F +44 (0)207 681 2580

T +44 (0)208 223 3081

W <http://www.stjohnslabs.com/>

E info@stjohnslabs.com