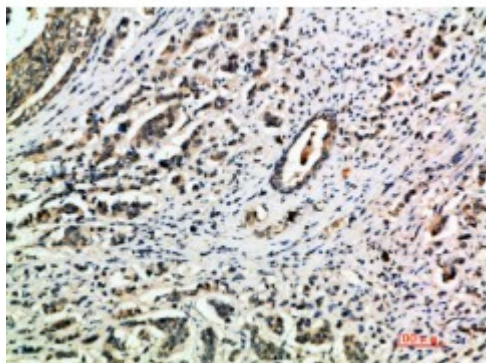


Anti-Integrin alpha antibody



| | |
|-------------------------|---|
| Description | Rabbit polyclonal to Integrin alpha1. |
| Model | STJ98709 |
| Host | Rabbit |
| Reactivity | Human |
| Applications | ELISA, IHC |
| Immunogen | Synthetic peptide from human Integrin alpha1 protein. |
| Immunogen Region | 920-980 aa |
| Gene ID | 3672 |
| Gene Symbol | ITGA1 |
| Dilution range | IHC-P 1:50-300ELISA 1:5000-20000 |
| Specificity | The antibody detects endogenous Integrin alpha1. |
| Purification | The antibody was affinity-purified from rabbit serum by affinity-chromatography using specific immunogen. |
| Note | For Research Use Only (RUO). |
| Protein Name | Integrin alpha-1 CD49 antigen-like family member A Laminin and collagen receptor VLA-1 CD antigen CD49a |
| Clonality | Polyclonal |
| Conjugation | Unconjugated |
| Isotype | IgG |

| | |
|-----------------------------------|--|
| Formulation | PBS, pH 7.4, containing 0.02% sodium azide as Preservative and 50% Glycerol. |
| Concentration | 1 mg/ml |
| Storage Instruction | Store at -20°C, and avoid repeat freeze-thaw cycles. |
| Database Links | HGNC:6134 OMIM:192968 |
| Alternative Names | Integrin alpha-1 CD49 antigen-like family member A Laminin and collagen receptor VLA-1 CD antigen CD49a |
| Function | Integrin alpha-1/beta-1 is a receptor for laminin and collagen. It recognizes the proline-hydroxylated sequence G-F-P-G-E-R in collagen. Involved in anchorage-dependent, negative regulation of EGF-stimulated cell growth. |
| Sequence and Domain Family | The integrin I-domain (insert) is a VWFA domain. Integrins with I-domains do not undergo protease cleavage. |
| Cellular Localization | Membrane. Single-pass type I membrane protein. |

St John's Laboratory Ltd

F +44 (0)207 681 2580

T +44 (0)208 223 3081

W <http://www.stjohnslabs.com/>

E info@stjohnslabs.com