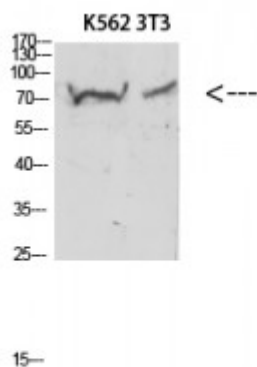


Anti-Endoglin antibody



Description	Rabbit polyclonal to Endoglin.
Model	STJ98713
Host	Rabbit
Reactivity	Human
Applications	ELISA, IHC, WB
Immunogen	Synthetic peptide from human Endoglin protein.
Immunogen Region	370-430 aa
Gene ID	2022
Gene Symbol	ENG
Dilution range	WB 1:500-2000IHC-P 1:50-300ELISA 1:5000-20000
Specificity	The antibody detects endogenous Endoglin.
Tissue Specificity	Endoglin is restricted to endothelial cells in all tissues except bone marrow.
Purification	The antibody was affinity-purified from rabbit serum by affinity-chromatography using specific immunogen.
Note	For Research Use Only (RUO).
Protein Name	Endoglin CD antigen CD105
Molecular Weight	70kDa
Clonality	Polyclonal
Conjugation	Unconjugated

Isotype	IgG
Formulation	PBS, pH 7.4, containing 0.02% sodium azide as Preservative and 50% Glycerol.
Concentration	1 mg/ml
Storage Instruction	Store at -20°C, and avoid repeat freeze-thaw cycles.
Database Links	HGNC:3349OMIM:131195
Alternative Names	Endoglin CD antigen CD105
Function	Major glycoprotein of vascular endothelium. Involved in the regulation of angiogenesis. May play a critical role in the binding of endothelial cells to integrins and/or other RGD receptors. Acts as TGF-beta coreceptor and is involved in the TGF-beta/BMP signaling cascade. Required for GDF2/BMP9 signaling through SMAD1 in endothelial cells and modulates TGF-beta1 signaling through SMAD3.
Cellular Localization	Membrane. Single-pass type I membrane protein.

St John's Laboratory Ltd

F +44 (0)207 681 2580

T +44 (0)208 223 3081

W <http://www.stjohnslabs.com/>

E info@stjohnslabs.com