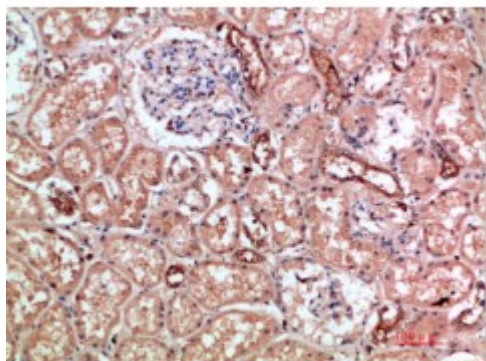


## Anti-CD11b antibody



<b>Description</b>	Rabbit polyclonal to CD11b.
<b>Model</b>	STJ98736
<b>Host</b>	Rabbit
<b>Reactivity</b>	Human
<b>Applications</b>	ELISA, IHC
<b>Immunogen</b>	Synthetic peptide from human CD11b protein.
<b>Immunogen Region</b>	280-360 aa
<b>Gene ID</b>	<a href="#">3684</a>
<b>Gene Symbol</b>	<a href="#">ITGAM</a>
<b>Dilution range</b>	IHC-P 1:50-300ELISA 1:5000-20000
<b>Specificity</b>	The antibody detects endogenous CD11b.
<b>Tissue Specificity</b>	Predominantly expressed in monocytes and granulocytes.
<b>Purification</b>	The antibody was affinity-purified from rabbit serum by affinity-chromatography using specific immunogen.
<b>Note</b>	For Research Use Only (RUO).
<b>Protein Name</b>	Integrin alpha-M CD11 antigen-like family member B CR-3 alpha chain Cell surface glycoprotein MAC-1 subunit alpha Leukocyte adhesion receptor MO1 Neutrophil adherence receptor CD antigen CD11b
<b>Clonality</b>	Polyclonal
<b>Conjugation</b>	Unconjugated

<b>Isotype</b>	IgG
<b>Formulation</b>	PBS, pH 7.4, containing 0.02% sodium azide as Preservative and 50% Glycerol.
<b>Concentration</b>	1 mg/ml
<b>Storage Instruction</b>	Store at -20°C, and avoid repeat freeze-thaw cycles.
<b>Database Links</b>	<a href="#">HGNC:6149OMIM:120980</a>
<b>Alternative Names</b>	Integrin alpha-M CD11 antigen-like family member B CR-3 alpha chain Cell surface glycoprotein MAC-1 subunit alpha Leukocyte adhesion receptor MO1 Neutrophil adherence receptor CD antigen CD11b
<b>Function</b>	Integrin alpha-M/beta-2 is implicated in various adhesive interactions of monocytes, macrophages and granulocytes as well as in mediating the uptake of complement-coated particles. It is identical with CR-3, the receptor for the iC3b fragment of the third complement component. It probably recognizes the R-G-D peptide in C3b. Integrin alpha-M/beta-2 is also a receptor for fibrinogen, factor X and ICAM1. It recognizes P1 and P2 peptides of fibrinogen gamma chain.
<b>Sequence and Domain Family</b>	The integrin I-domain (insert) is a VWFA domain. Integrins with I-domains do not undergo protease cleavage.
<b>Cellular Localization</b>	Membrane. Single-pass type I membrane protein.

---

**St John's Laboratory Ltd**

**F** +44 (0)207 681 2580

**T** +44 (0)208 223 3081

**W** <http://www.stjohnslabs.com/>

**E** [info@stjohnslabs.com](mailto:info@stjohnslabs.com)