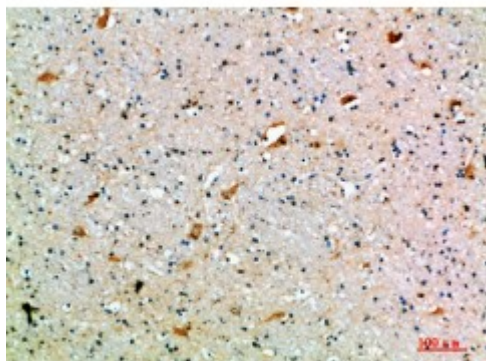


## Anti-CD108 antibody



|                           |  |
|---------------------------|--|
| <b>Description</b>        | Rabbit polyclonal to CD108.  |
| <b>Model</b>              | STJ98740   |
| <b>Host</b>               | Rabbit   |
| <b>Reactivity</b>         | Human, Mouse, Rat  |
| <b>Applications</b>       | ELISA, IHC   |
| <b>Immunogen</b>          | Synthetic peptide from human CD108 protein.  |
| <b>Immunogen Region</b>   | 101-150 aa   |
| <b>Gene ID</b>            | <a href="#">8482</a>   |
| <b>Gene Symbol</b>        | <a href="#">SEMA7A</a>   |
| <b>Dilution range</b>     | IHC-P 1:50-300ELISA 1:5000-20000   |
| <b>Specificity</b>        | The antibody detects endogenous CD108.   |
| <b>Tissue Specificity</b> | Detected in skin keratinocytes and on endothelial cells from skin blood vessels (at protein level). Expressed in fibroblasts, keratinocytes, melanocytes, placenta, testis, ovary, spleen, brain, spinal chord, lung, heart, adrenal gland, lymph nodes, thymus, intestine and kidney. |
| <b>Purification</b>       | The antibody was affinity-purified from rabbit serum by affinity-chromatography using specific immunogen.  |
| <b>Note</b>               | For Research Use Only (RUO).   |
| <b>Protein Name</b>       | Semaphorin-7A CDw108 JMH blood group antigen John-Milton-Hargen human blood group Ag Semaphorin-K1 Sema K1 Semaphorin-L Sema L CD antigen CD108  |

|                              |  |
|------------------------------|--|
| <b>Clonality</b>             | Polyclonal   |
| <b>Conjugation</b>           | Unconjugated   |
| <b>Isotype</b>               | IgG  |
| <b>Formulation</b>           | PBS, pH 7.4, containing 0.02% sodium azide as Preservative and 50% Glycerol.   |
| <b>Concentration</b>         | 1 mg/ml  |
| <b>Storage Instruction</b>   | Store at -20°C, and avoid repeat freeze-thaw cycles.   |
| <b>Database Links</b>        | <a href="#">HGNC:10741OMIM:607961</a>  |
| <b>Alternative Names</b>     | Semaphorin-7A CDw108 JMH blood group antigen John-Milton-Hargen human blood group Ag Semaphorin-K1 Sema K1 Semaphorin-L Sema L CD antigen CD108  |
| <b>Function</b>              | Plays an important role in integrin-mediated signaling and functions both in regulating cell migration and immune responses. Promotes formation of focal adhesion complexes, activation of the protein kinase PTK2/FAK1 and subsequent phosphorylation of MAPK1 and MAPK3. Promotes production of proinflammatory cytokines by monocytes and macrophages. Plays an important role in modulating inflammation and T-cell-mediated immune responses. Promotes axon growth in the embryonic olfactory bulb. Promotes attachment, spreading and dendrite outgrowth in melanocytes. |
| <b>Cellular Localization</b> | Cell membrane. Detected in a punctate pattern on the cell membrane of basal and supra-basal skin keratinocytes.  |