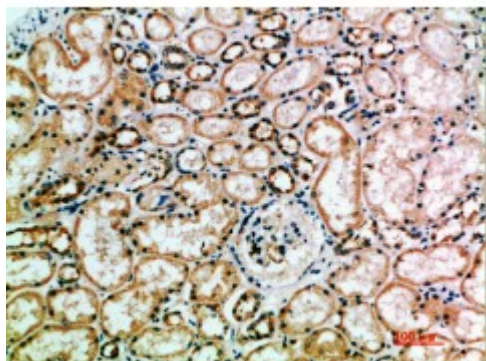


Anti-CD158k antibody



Description	Rabbit polyclonal to CD158k.
Model	STJ98750
Host	Rabbit
Reactivity	Human
Applications	ELISA, IHC
Immunogen	Synthetic peptide from human CD158k protein.
Immunogen Region	221-270 aa
Gene ID	3812
Gene Symbol	KIR3DL2
Dilution range	IHC-P 1:50-300ELISA 1:5000-20000
Specificity	The antibody detects endogenous CD158k.
Purification	The antibody was affinity-purified from rabbit serum by affinity-chromatography using specific immunogen.
Note	For Research Use Only (RUO).
Protein Name	Killer cell immunoglobulin-like receptor 3DL2 CD158 antigen-like family member K MHC class I NK cell receptor Natural killer-associated transcript 4 NKAT-4 p70 natural killer cell receptor clone CL-5 p70 NK receptor CL-
Clonality	Polyclonal
Conjugation	Unconjugated
Isotype	IgG

Formulation	PBS, pH 7.4, containing 0.02% sodium azide as Preservative and 50% Glycerol.
Concentration	1 mg/ml
Storage Instruction	Store at -20°C, and avoid repeat freeze-thaw cycles.
Database Links	HGNC:6339OMIM:604947
Alternative Names	Killer cell immunoglobulin-like receptor 3DL2 CD158 antigen-like family member K MHC class I NK cell receptor Natural killer-associated transcript 4 NKAT-4 p70 natural killer cell receptor clone CL-5 p70 NK receptor CL-
Function	Receptor on natural killer (NK) cells for HLA-A alleles. Inhibits the activity of NK cells thus preventing cell lysis.
Cellular Localization	Cell membrane. Single-pass type I membrane protein.

St John's Laboratory Ltd

F +44 (0)207 681 2580

T +44 (0)208 223 3081

W <http://www.stjohnslabs.com/>

E info@stjohnslabs.com