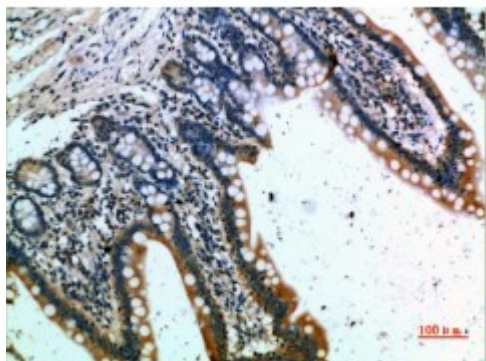


Anti-CKR-1 antibody



Description	Rabbit polyclonal to CKR-1.
Model	STJ98756
Host	Rabbit
Reactivity	Human
Applications	ELISA, IHC
Immunogen	Synthetic peptide from human CKR-1 protein.
Immunogen Region	151-200 aa
Gene ID	1230
Gene Symbol	CCR1
Dilution range	IHC-P 1:50-300ELISA 1:5000-20000
Specificity	The antibody detects endogenous CKR-1.
Tissue Specificity	Widely expressed in different hematopoietic cells.
Purification	The antibody was affinity-purified from rabbit serum by affinity-chromatography using specific immunogen.
Note	For Research Use Only (RUO).
Protein Name	C-C chemokine receptor type 1 C-C CKR-1 CC-CKR-1 CCR-1 CCR1 HM145 LD78 receptor Macrophage inflammatory protein 1-alpha receptor MIP-1alpha-R RANTES-R CD antigen CD191
Clonality	Polyclonal
Conjugation	Unconjugated

Isotype	IgG
Formulation	PBS, pH 7.4, containing 0.02% sodium azide as Preservative and 50% Glycerol.
Concentration	1 mg/ml
Storage Instruction	Store at -20°C, and avoid repeat freeze-thaw cycles.
Database Links	HGNC:1602OMIM:601159
Alternative Names	C-C chemokine receptor type 1 C-C CKR-1 CC-CKR-1 CCR-1 CCR1 HM145 LD78 receptor Macrophage inflammatory protein 1-alpha receptor MIP-1alpha-R RANTES-R CD antigen CD191
Function	Receptor for a C-C type chemokine. Binds to MIP-1-alpha, MIP-1-delta, RANTES, and MCP-3 and, less efficiently, to MIP-1-beta or MCP-1 and subsequently transduces a signal by increasing the intracellular calcium ions level. Responsible for affecting stem cell proliferation.
Cellular Localization	Cell membrane

St John's Laboratory Ltd

F +44 (0)207 681 2580

T +44 (0)208 223 3081

W <http://www.stjohnslabs.com/>

E info@stjohnslabs.com