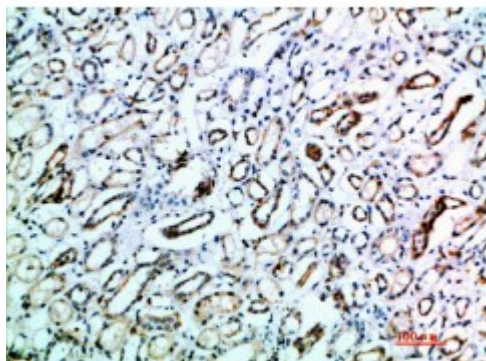


Anti-CD231 antibody



Description	Rabbit polyclonal to CD231.
Model	STJ98761
Host	Rabbit
Reactivity	Human, Mouse, Rat
Applications	ELISA, IHC
Immunogen	Synthetic peptide from human CD231 protein.
Immunogen Region	101-150 aa
Gene ID	7102
Gene Symbol	TSPAN7
Dilution range	IHC-P 1:50-300ELISA 1:5000-20000
Specificity	The antibody detects endogenous CD231.
Tissue Specificity	Not solely expressed in T-cells. Expressed in acute myelocytic leukemia cells of some patients.
Purification	The antibody was affinity-purified from rabbit serum by affinity-chromatography using specific immunogen.
Note	For Research Use Only (RUO).
Protein Name	Tetraspanin-7 Tspan-7 Cell surface glycoprotein A15 Membrane component chromosome X surface marker 1 T-cell acute lymphoblastic leukemia-associated antigen 1 TALLA-1 Transmembrane 4 superfamily member 2 CD antigen

Clonality	Polyclonal
Conjugation	Unconjugated
Isotype	IgG
Formulation	PBS, pH 7.4, containing 0.02% sodium azide as Preservative and 50% Glycerol.
Concentration	1 mg/ml
Storage Instruction	Store at -20°C, and avoid repeat freeze-thaw cycles.
Database Links	HGNC:11854 OMIM:300096
Alternative Names	Tetraspanin-7 Tspan-7 Cell surface glycoprotein A15 Membrane component chromosome X surface marker 1 T-cell acute lymphoblastic leukemia-associated antigen 1 TALLA-1 Transmembrane 4 superfamily member 2 CD antigen
Function	May be involved in cell proliferation and cell motility.
Cellular Localization	Membrane. Multi-pass membrane protein.

St John's Laboratory Ltd

F +44 (0)207 681 2580

T +44 (0)208 223 3081

W <http://www.stjohnslabs.com/>

E info@stjohnslabs.com