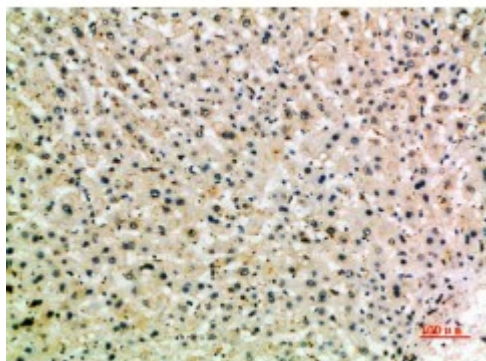


Anti-CD204 antibody



Description	Rabbit polyclonal to CD204.
Model	STJ98763
Host	Rabbit
Reactivity	Human, Mouse, Rat
Applications	ELISA, IHC
Immunogen	Synthetic peptide from human CD204 protein.
Immunogen Region	241-290 aa
Gene ID	4481
Gene Symbol	MSR1
Dilution range	IHC-P 1:50-300ELISA 1:5000-20000
Specificity	The antibody detects endogenous CD204.
Tissue Specificity	Isoform I, isoform II and isoform III are expressed in monocyte-derived macrophages. Isoform I and isoform II are expressed in the liver, placenta and brain.
Purification	The antibody was affinity-purified from rabbit serum by affinity-chromatography using specific immunogen.
Note	For Research Use Only (RUO).
Protein Name	Macrophage scavenger receptor types I and II Macrophage acetylated LDL receptor I and II Scavenger receptor class A member 1 CD antigen CD204
Clonality	Polyclonal

Conjugation	Unconjugated
Isotype	IgG
Formulation	PBS, pH 7.4, containing 0.02% sodium azide as Preservative and 50% Glycerol.
Concentration	1 mg/ml
Storage Instruction	Store at -20°C, and avoid repeat freeze-thaw cycles.
Database Links	HGNC:7376OMIM:153622
Alternative Names	Macrophage scavenger receptor types I and II Macrophage acetylated LDL receptor I and II Scavenger receptor class A member 1 CD antigen CD204
Function	Membrane glycoproteins implicated in the pathologic deposition of cholesterol in arterial walls during atherogenesis. Two types of receptor subunits exist. These receptors mediate the endocytosis of a diverse group of macromolecules, including modified low density lipoproteins (LDL) . Isoform III does not internalize acetylated LDL .
Cellular Localization	Membrane. Single-pass type II membrane protein.

St John's Laboratory Ltd

F +44 (0)207 681 2580

T +44 (0)208 223 3081

W <http://www.stjohnslabs.com/>

E info@stjohnslabs.com