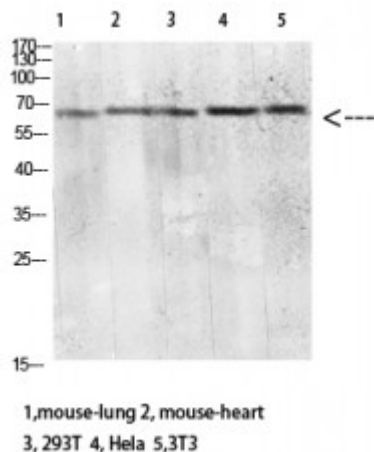


Anti-CD299 antibody



Description	Rabbit polyclonal to CD299.
Model	STJ98766
Host	Rabbit
Reactivity	Human, Mouse, Rat
Applications	ELISA, IHC, WB
Immunogen	Synthetic peptide from human CD299 protein.
Immunogen Region	271-320 aa
Gene ID	10332
Gene Symbol	CLEC4M
Dilution range	WB 1:500-2000IHC-P 1:50-300ELISA 1:5000-20000
Specificity	The antibody detects endogenous CD299.
Tissue Specificity	Predominantly highly expressed in liver sinusoidal endothelial cells and in lymph node. Found in placental endothelium but not in macrophages. Expressed in type II alveolar cells and lung endothelial cells.
Purification	The antibody was affinity-purified from rabbit serum by affinity-chromatography using specific immunogen.
Note	For Research Use Only (RUO).
Protein Name	C-type lectin domain family 4 member M CD209 antigen-like protein 1 DC-SIGN-related protein DC-SIGNR Dendritic cell-specific ICAM-3-grabbing non-integrin 2 DC-SIGN2 Liver/lymph node-specific ICAM-3-grabbing non-integrin

Molecular Weight	60kDa
Clonality	Polyclonal
Conjugation	Unconjugated
Isotype	IgG
Formulation	PBS, pH 7.4, containing 0.02% sodium azide as Preservative and 50% Glycerol.
Concentration	1 mg/ml
Storage Instruction	Store at -20°C, and avoid repeat freeze-thaw cycles.
Database Links	HGNC:13523OMIM:605872
Alternative Names	C-type lectin domain family 4 member M CD209 antigen-like protein 1 DC-SIGN-related protein DC-SIGNR Dendritic cell-specific ICAM-3-grabbing non-integrin 2 DC-SIGN2 Liver/lymph node-specific ICAM-3-grabbing non-integrin
Function	<p>Probable pathogen-recognition receptor involved in peripheral immune surveillance in liver. May mediate the endocytosis of pathogens which are subsequently degraded in lysosomal compartments. Is a receptor for ICAM3, probably by binding to mannose-like carbohydrates. (Microbial infection)</p> <p>Acts as an attachment receptor for ebola virus . Acts as an attachment receptor for hepatitis C virus . Acts as an attachment receptor for HIV-1 . Acts as an attachment receptor for human coronavirus 229E . Acts as an attachment receptor for human cytomegalovirus/HHV-5 . Acts as an attachment receptor for influenzavirus . Acts as an attachment receptor for SARS coronavirus . Acts as an attachment receptor for west-nile virus . Acts as an attachment receptor for Japanese encephalitis virus . Acts as an attachment receptor for Marburg virus glycoprotein . Recognition of M.bovis by dendritic cells may occur partially via this molecule .</p>
Sequence and Domain Family	The tandem repeat domain, also called neck domain, mediates oligomerization.
Cellular Localization	Isoform 1: Cell membrane Isoform 2: Cell membrane Isoform 3: Cell membrane Isoform 5: Secreted Isoform 6: Secreted Isoform 7: Secreted Isoform 10: Secreted