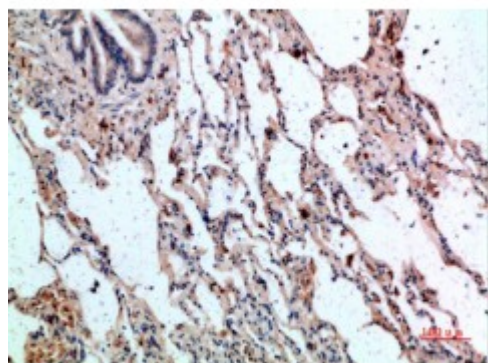


## Anti-CD236 antibody



<b>Description</b>	Rabbit polyclonal to CD236.
<b>Model</b>	STJ98767
<b>Host</b>	Rabbit
<b>Reactivity</b>	Human
<b>Applications</b>	ELISA, IHC
<b>Immunogen</b>	Synthetic peptide from human CD236 protein.
<b>Immunogen Region</b>	11-60 aa
<b>Gene ID</b>	<a href="#">2995</a>
<b>Gene Symbol</b>	<a href="#">GYPC</a>
<b>Dilution range</b>	IHC-P 1:50-300ELISA 1:5000-20000
<b>Specificity</b>	The antibody detects endogenous CD236.
<b>Tissue Specificity</b>	Glycophorin-C is expressed in erythrocytes. Glycophorin-D and IsoGPC are ubiquitously expressed.
<b>Purification</b>	The antibody was affinity-purified from rabbit serum by affinity-chromatography using specific immunogen.
<b>Note</b>	For Research Use Only (RUO).
<b>Protein Name</b>	Glycophorin-C Glycoconnectin Glycophorin-D GPD Glycoprotein beta PAS-2' Sialoglycoprotein D CD antigen CD236
<b>Clonality</b>	Polyclonal
<b>Conjugation</b>	Unconjugated

<b>Isotype</b>	IgG
<b>Formulation</b>	PBS, pH 7.4, containing 0.02% sodium azide as Preservative and 50% Glycerol.
<b>Concentration</b>	1 mg/ml
<b>Storage Instruction</b>	Store at -20°C, and avoid repeat freeze-thaw cycles.
<b>Database Links</b>	<a href="#">HGNC:4704OMIM:110750</a>
<b>Alternative Names</b>	Glycophorin-C Glycoconnectin Glycophorin-D GPD Glycoprotein beta PAS-2' Sialoglycoprotein D CD antigen CD236
<b>Function</b>	This protein is a minor sialoglycoprotein in human erythrocyte membranes. The blood group Gerbich antigens and receptors for Plasmodium falciparum merozoites are most likely located within the extracellular domain. Glycophorin-C plays an important role in regulating the stability of red cells.
<b>Cellular Localization</b>	Cell membrane. Single-pass type III membrane protein. Linked to the membrane via band 4.1.
<b>Post-translational Modifications</b>	O-glycosylated with core 1 or possibly core 8 glycans.

---

**St John's Laboratory Ltd**

**F** +44 (0)207 681 2580

**T** +44 (0)208 223 3081

**W** <http://www.stjohnslabs.com/>

**E** [info@stjohnslabs.com](mailto:info@stjohnslabs.com)