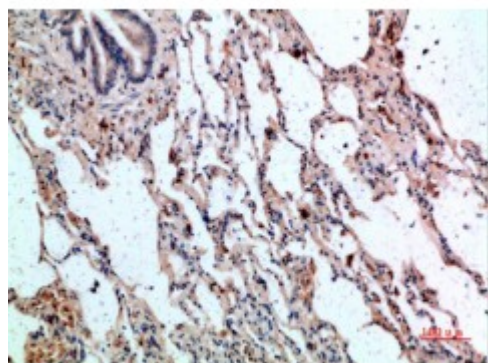


Anti-CD236 antibody



Description	Rabbit polyclonal to CD236.
Model	STJ98767
Host	Rabbit
Reactivity	Human
Applications	ELISA, IHC
Immunogen	Synthetic peptide from human CD236 protein.
Immunogen Region	11-60 aa
Gene ID	2995
Gene Symbol	GYPC
Dilution range	IHC-P 1:50-300ELISA 1:5000-20000
Specificity	The antibody detects endogenous CD236.
Tissue Specificity	Glycophorin-C is expressed in erythrocytes. Glycophorin-D and IsoGPC are ubiquitously expressed.
Purification	The antibody was affinity-purified from rabbit serum by affinity-chromatography using specific immunogen.
Note	For Research Use Only (RUO).
Protein Name	Glycophorin-C Glycoconnectin Glycophorin-D GPD Glycoprotein beta PAS-2' Sialoglycoprotein D CD antigen CD236
Clonality	Polyclonal
Conjugation	Unconjugated

Isotype	IgG
Formulation	PBS, pH 7.4, containing 0.02% sodium azide as Preservative and 50% Glycerol.
Concentration	1 mg/ml
Storage Instruction	Store at -20°C, and avoid repeat freeze-thaw cycles.
Database Links	HGNC:4704OMIM:110750
Alternative Names	Glycophorin-C Glycoconnectin Glycophorin-D GPD Glycoprotein beta PAS-2' Sialoglycoprotein D CD antigen CD236
Function	This protein is a minor sialoglycoprotein in human erythrocyte membranes. The blood group Gerbich antigens and receptors for Plasmodium falciparum merozoites are most likely located within the extracellular domain. Glycophorin-C plays an important role in regulating the stability of red cells.
Cellular Localization	Cell membrane. Single-pass type III membrane protein. Linked to the membrane via band 4.1.
Post-translational Modifications	O-glycosylated with core 1 or possibly core 8 glycans.

St John's Laboratory Ltd

F +44 (0)207 681 2580

T +44 (0)208 223 3081

W <http://www.stjohnslabs.com/>

E info@stjohnslabs.com