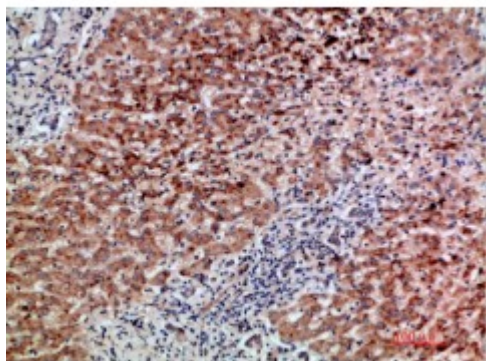


Anti-BMP-9 antibody



Description	Rabbit polyclonal to BMP-9.
Model	STJ98776
Host	Rabbit
Reactivity	Human, Mouse
Applications	ELISA, IHC
Immunogen	Synthetic peptide from human BMP-9 protein.
Immunogen Region	371-420 aa
Gene ID	2658
Gene Symbol	GDF2
Dilution range	IHC-P 1:50-300ELISA 1:5000-20000
Specificity	The antibody detects endogenous BMP-9.
Purification	The antibody was affinity-purified from rabbit serum by affinity-chromatography using specific immunogen.
Note	For Research Use Only (RUO).
Protein Name	Growth/differentiation factor 2 GDF-2 Bone morphogenetic protein 9 BMP-9
Clonality	Polyclonal
Conjugation	Unconjugated
Isotype	IgG
Formulation	PBS, pH 7.4, containing 0.02% sodium azide as Preservative and 50%

	Glycerol.
Concentration	1 mg/ml
Storage Instruction	Store at -20°C, and avoid repeat freeze-thaw cycles.
Database Links	HGNC:4217OMIM:605120
Alternative Names	Growth/differentiation factor 2 GDF-2 Bone morphogenetic protein 9 BMP-9
Function	Potent circulating inhibitor of angiogenesis. Could be involved in bone formation. Signals through the type I activin receptor ACVRL1 but not other Alks. Signaling through SMAD1 in endothelial cells requires TGF-beta coreceptor endoglin/ENG.
Cellular Localization	Secreted

St John's Laboratory Ltd

F +44 (0)207 681 2580

T +44 (0)208 223 3081

W <http://www.stjohnslabs.com/>

E info@stjohnslabs.com