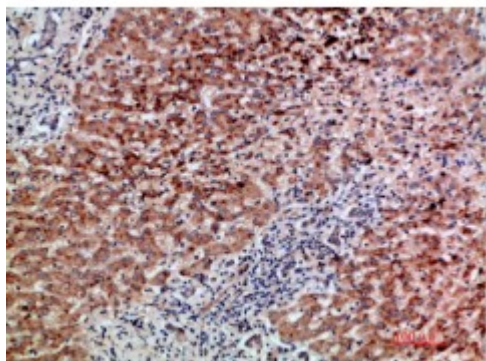


## Anti-BMP-9 antibody



<b>Description</b>	Rabbit polyclonal to BMP-9.
<b>Model</b>	STJ98776
<b>Host</b>	Rabbit
<b>Reactivity</b>	Human, Mouse
<b>Applications</b>	ELISA, IHC
<b>Immunogen</b>	Synthetic peptide from human BMP-9 protein.
<b>Immunogen Region</b>	371-420 aa
<b>Gene ID</b>	<a href="#">2658</a>
<b>Gene Symbol</b>	<a href="#">GDF2</a>
<b>Dilution range</b>	IHC-P 1:50-300ELISA 1:5000-20000
<b>Specificity</b>	The antibody detects endogenous BMP-9.
<b>Purification</b>	The antibody was affinity-purified from rabbit serum by affinity-chromatography using specific immunogen.
<b>Note</b>	For Research Use Only (RUO).
<b>Protein Name</b>	Growth/differentiation factor 2 GDF-2 Bone morphogenetic protein 9 BMP-9
<b>Clonality</b>	Polyclonal
<b>Conjugation</b>	Unconjugated
<b>Isotype</b>	IgG
<b>Formulation</b>	PBS, pH 7.4, containing 0.02% sodium azide as Preservative and 50%

	Glycerol.
<b>Concentration</b>	1 mg/ml
<b>Storage Instruction</b>	Store at -20°C, and avoid repeat freeze-thaw cycles.
<b>Database Links</b>	<a href="#">HGNC:4217OMIM:605120</a>
<b>Alternative Names</b>	Growth/differentiation factor 2 GDF-2 Bone morphogenetic protein 9 BMP-9
<b>Function</b>	Potent circulating inhibitor of angiogenesis. Could be involved in bone formation. Signals through the type I activin receptor ACVRL1 but not other Alks. Signaling through SMAD1 in endothelial cells requires TGF-beta coreceptor endoglin/ENG.
<b>Cellular Localization</b>	Secreted

---

**St John's Laboratory Ltd**

**F** +44 (0)207 681 2580

**T** +44 (0)208 223 3081

**W** <http://www.stjohnslabs.com/>

**E** [info@stjohnslabs.com](mailto:info@stjohnslabs.com)