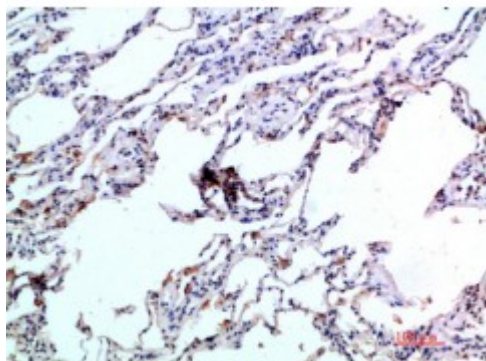


Anti-Eotaxin-2 antibody



Description	Rabbit polyclonal to Eotaxin-2.
Model	STJ98779
Host	Rabbit
Reactivity	Human
Applications	ELISA, IHC
Immunogen	Synthetic peptide from human Eotaxin-2 protein.
Immunogen Region	61-110 aa
Gene ID	6369
Gene Symbol	CCL24
Dilution range	IHC-P 1:50-300ELISA 1:5000-20000
Specificity	The antibody detects endogenous Eotaxin-2.
Tissue Specificity	Activated monocytes and activated T lymphocytes.
Purification	The antibody was affinity-purified from rabbit serum by affinity-chromatography using specific immunogen.
Note	For Research Use Only (RUO).
Protein Name	C-C motif chemokine 24 CK-beta-6 Eosinophil chemotactic protein 2 Eotaxin-2 Myeloid progenitor inhibitory factor 2 MPIF-2 Small-inducible cytokine A24
Clonality	Polyclonal
Conjugation	Unconjugated

Isotype	IgG
Formulation	PBS, pH 7.4, containing 0.02% sodium azide as Preservative and 50% Glycerol.
Concentration	1 mg/ml
Storage Instruction	Store at -20°C, and avoid repeat freeze-thaw cycles.
Database Links	HGNC:10623OMIM:602495
Alternative Names	C-C motif chemokine 24 CK-beta-6 Eosinophil chemotactic protein 2 Eotaxin-2 Myeloid progenitor inhibitory factor 2 MPIF-2 Small-inducible cytokine A24
Function	Chemotactic for resting T-lymphocytes, and eosinophils. Has lower chemotactic activity for neutrophils but none for monocytes and activated lymphocytes. Is a strong suppressor of colony formation by a multipotential hematopoietic progenitor cell line. Binds to CCR3.
Cellular Localization	Secreted.
Post-translational Modifications	N-glycosylated.

St John's Laboratory Ltd

F +44 (0)207 681 2580

T +44 (0)208 223 3081

W <http://www.stjohnslabs.com/>

E info@stjohnslabs.com