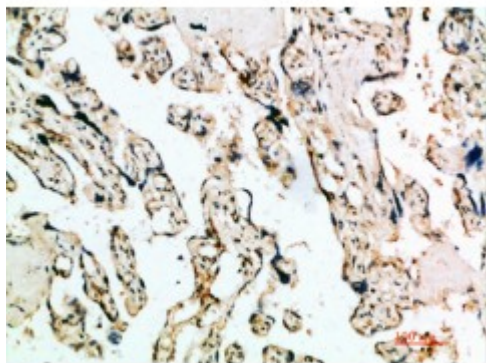


Anti-IFN-beta antibody



Description	Rabbit polyclonal to IFN-beta.
Model	STJ98784
Host	Rabbit
Reactivity	Human
Applications	ELISA, IHC
Immunogen	Synthetic peptide from human IFN-beta protein.
Immunogen Region	91-140 aa
Gene ID	3456
Gene Symbol	IFNB1
Dilution range	IHC-P 1:50-300ELISA 1:5000-20000
Specificity	The antibody detects endogenous IFN-beta.
Purification	The antibody was affinity-purified from rabbit serum by affinity-chromatography using specific immunogen.
Note	For Research Use Only (RUO).
Protein Name	Interferon beta IFN-beta Fibroblast interferon
Clonality	Polyclonal
Conjugation	Unconjugated
Isotype	IgG
Formulation	PBS, pH 7.4, containing 0.02% sodium azide as Preservative and 50%

	Glycerol.
Concentration	1 mg/ml
Storage Instruction	Store at -20°C, and avoid repeat freeze-thaw cycles.
Database Links	HGNC:5434OMIM:147640
Alternative Names	Interferon beta IFN-beta Fibroblast interferon
Function	Has antiviral, antibacterial and anticancer activities.
Cellular Localization	Secreted.

St John's Laboratory Ltd

F +44 (0)207 681 2580

T +44 (0)208 223 3081

W <http://www.stjohnslabs.com/>

E info@stjohnslabs.com