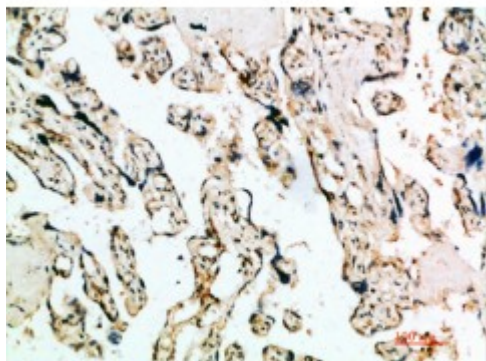


## Anti-IFN-beta antibody



<b>Description</b>	Rabbit polyclonal to IFN-beta.
<b>Model</b>	STJ98784
<b>Host</b>	Rabbit
<b>Reactivity</b>	Human
<b>Applications</b>	ELISA, IHC
<b>Immunogen</b>	Synthetic peptide from human IFN-beta protein.
<b>Immunogen Region</b>	91-140 aa
<b>Gene ID</b>	<a href="#">3456</a>
<b>Gene Symbol</b>	<a href="#">IFNB1</a>
<b>Dilution range</b>	IHC-P 1:50-300ELISA 1:5000-20000
<b>Specificity</b>	The antibody detects endogenous IFN-beta.
<b>Purification</b>	The antibody was affinity-purified from rabbit serum by affinity-chromatography using specific immunogen.
<b>Note</b>	For Research Use Only (RUO).
<b>Protein Name</b>	Interferon beta IFN-beta Fibroblast interferon
<b>Clonality</b>	Polyclonal
<b>Conjugation</b>	Unconjugated
<b>Isotype</b>	IgG
<b>Formulation</b>	PBS, pH 7.4, containing 0.02% sodium azide as Preservative and 50%

	Glycerol.
<b>Concentration</b>	1 mg/ml
<b>Storage Instruction</b>	Store at -20°C, and avoid repeat freeze-thaw cycles.
<b>Database Links</b>	<a href="#">HGNC:5434OMIM:147640</a>
<b>Alternative Names</b>	Interferon beta IFN-beta Fibroblast interferon
<b>Function</b>	Has antiviral, antibacterial and anticancer activities.
<b>Cellular Localization</b>	Secreted.

---

**St John's Laboratory Ltd**

**F** +44 (0)207 681 2580

**T** +44 (0)208 223 3081

**W** <http://www.stjohnslabs.com/>

**E** [info@stjohnslabs.com](mailto:info@stjohnslabs.com)