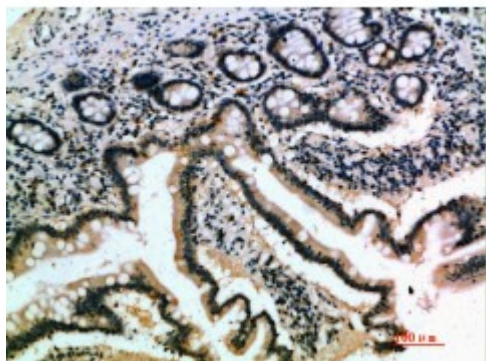


## Anti-IL-17B antibody



<b>Description</b>	Rabbit polyclonal to IL-17B.
<b>Model</b>	STJ98796
<b>Host</b>	Rabbit
<b>Reactivity</b>	Human, Rat
<b>Applications</b>	ELISA, IHC
<b>Immunogen</b>	Synthetic peptide from human IL-17B protein.
<b>Immunogen Region</b>	1-50 aa
<b>Gene ID</b>	<a href="#">27190</a>
<b>Gene Symbol</b>	<a href="#">IL17B</a>
<b>Dilution range</b>	IHC-P 1:50-300ELISA 1:5000-20000
<b>Specificity</b>	The antibody detects endogenous IL-17B.
<b>Tissue Specificity</b>	Expressed in adult pancreas, small intestine, stomach, spinal cord and testis. Less pronounced expression in prostate, colon mucosal lining, and ovary.
<b>Purification</b>	The antibody was affinity-purified from rabbit serum by affinity-chromatography using specific immunogen.
<b>Note</b>	For Research Use Only (RUO).
<b>Protein Name</b>	Interleukin-17B IL-17B Cytokine Zcyto7 Interleukin-20 IL-20 Neuronal interleukin-17-related factor
<b>Clonality</b>	Polyclonal
<b>Conjugation</b>	Unconjugated

<b>Isotype</b>	IgG
<b>Formulation</b>	PBS, pH 7.4, containing 0.02% sodium azide as Preservative and 50% Glycerol.
<b>Concentration</b>	1 mg/ml
<b>Storage Instruction</b>	Store at -20°C, and avoid repeat freeze-thaw cycles.
<b>Database Links</b>	<a href="#">HGNC:5982OMIM:604627</a>
<b>Alternative Names</b>	Interleukin-17B IL-17B Cytokine Zcyto7 Interleukin-20 IL-20 Neuronal interleukin-17-related factor
<b>Function</b>	Stimulates the release of tumor necrosis factor alpha and IL-1-beta from the monocytic cell line THP-1.
<b>Cellular Localization</b>	Secreted.

---

**St John's Laboratory Ltd**

**F** +44 (0)207 681 2580

**T** +44 (0)208 223 3081

**W** <http://www.stjohnslabs.com/>

**E** [info@stjohnslabs.com](mailto:info@stjohnslabs.com)