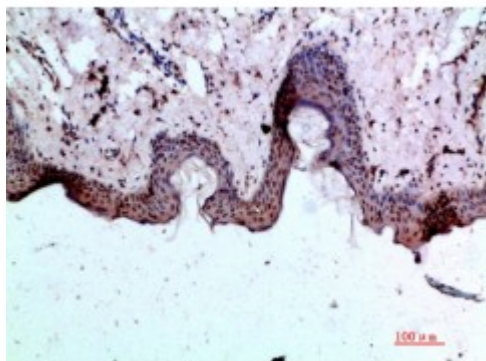


Anti-BMP-1 antibody



Description	Rabbit polyclonal to BMP-1.
Model	STJ98798
Host	Rabbit
Reactivity	Human, Mouse, Rat
Applications	ELISA, IHC
Immunogen	Synthetic peptide from human BMP-1 protein.
Immunogen Region	131-180 aa
Gene ID	649
Gene Symbol	BMP1
Dilution range	IHC-P 1:50-300ELISA 1:5000-20000
Specificity	The antibody detects endogenous BMP-1.
Tissue Specificity	Ubiquitous.
Purification	The antibody was affinity-purified from rabbit serum by affinity-chromatography using specific immunogen.
Note	For Research Use Only (RUO).
Protein Name	Bone morphogenetic protein 1 BMP-1 Mammalian tolloid protein mTld Procollagen C-proteinase PCP
Clonality	Polyclonal
Conjugation	Unconjugated

Isotype	IgG
Formulation	PBS, pH 7.4, containing 0.02% sodium azide as Preservative and 50% Glycerol.
Concentration	1 mg/ml
Storage Instruction	Store at -20°C, and avoid repeat freeze-thaw cycles.
Database Links	HGNC:1067OMIM:112264
Alternative Names	Bone morphogenetic protein 1 BMP-1 Mammalian tolloid protein mTld Procollagen C-proteinase PCP
Function	Cleaves the C-terminal propeptides of procollagen I, II and III. Induces cartilage and bone formation. May participate in dorsoventral patterning during early development by cleaving chordin (CHRD). Responsible for the proteolytic activation of lysyl oxidase LOX.
Cellular Localization	Golgi apparatus, trans-Golgi network Secreted, extracellular space, extracellular matrix. Co-localizes with POSTN in the Golgi.
Post-translational Modifications	Proteolytically activated in the trans-Golgi network by furin-like/paired basic proprotein convertases, cleavage is not required for secretion.

St John's Laboratory Ltd

F +44 (0)207 681 2580

T +44 (0)208 223 3081

W <http://www.stjohnslabs.com/>

E info@stjohnslabs.com