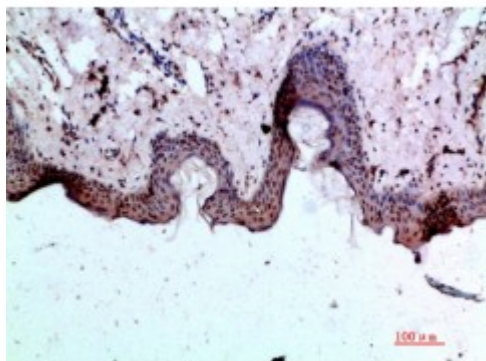


## Anti-BMP-1 antibody



<b>Description</b>	Rabbit polyclonal to BMP-1.
<b>Model</b>	STJ98798
<b>Host</b>	Rabbit
<b>Reactivity</b>	Human, Mouse, Rat
<b>Applications</b>	ELISA, IHC
<b>Immunogen</b>	Synthetic peptide from human BMP-1 protein.
<b>Immunogen Region</b>	131-180 aa
<b>Gene ID</b>	<a href="#">649</a>
<b>Gene Symbol</b>	<a href="#">BMP1</a>
<b>Dilution range</b>	IHC-P 1:50-300ELISA 1:5000-20000
<b>Specificity</b>	The antibody detects endogenous BMP-1.
<b>Tissue Specificity</b>	Ubiquitous.
<b>Purification</b>	The antibody was affinity-purified from rabbit serum by affinity-chromatography using specific immunogen.
<b>Note</b>	For Research Use Only (RUO).
<b>Protein Name</b>	Bone morphogenetic protein 1 BMP-1 Mammalian tolloid protein mTld Procollagen C-proteinase PCP
<b>Clonality</b>	Polyclonal
<b>Conjugation</b>	Unconjugated

<b>Isotype</b>	IgG
<b>Formulation</b>	PBS, pH 7.4, containing 0.02% sodium azide as Preservative and 50% Glycerol.
<b>Concentration</b>	1 mg/ml
<b>Storage Instruction</b>	Store at -20°C, and avoid repeat freeze-thaw cycles.
<b>Database Links</b>	<a href="https://www.ncbi.nlm.nih.gov/omim/112264">HGNC:1067OMIM:112264</a>
<b>Alternative Names</b>	Bone morphogenetic protein 1 BMP-1 Mammalian tolloid protein mTld Procollagen C-proteinase PCP
<b>Function</b>	Cleaves the C-terminal propeptides of procollagen I, II and III. Induces cartilage and bone formation. May participate in dorsoventral patterning during early development by cleaving chordin (CHRD). Responsible for the proteolytic activation of lysyl oxidase LOX.
<b>Cellular Localization</b>	Golgi apparatus, trans-Golgi network Secreted, extracellular space, extracellular matrix. Co-localizes with POSTN in the Golgi.
<b>Post-translational Modifications</b>	Proteolytically activated in the trans-Golgi network by furin-like/paired basic proprotein convertases, cleavage is not required for secretion.

---

**St John's Laboratory Ltd**

**F** +44 (0)207 681 2580

**T** +44 (0)208 223 3081

**W** <http://www.stjohnslabs.com/>

**E** [info@stjohnslabs.com](mailto:info@stjohnslabs.com)