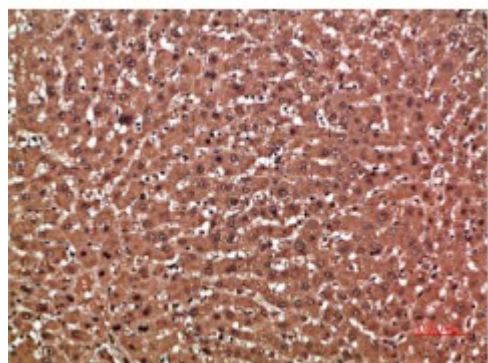


## Anti-GSTA1 antibody



<b>Description</b>	Rabbit polyclonal to GSTA1.
<b>Model</b>	STJ98802
<b>Host</b>	Rabbit
<b>Reactivity</b>	Human
<b>Applications</b>	ELISA, IHC
<b>Immunogen</b>	Synthetic peptide from human GSTA1 protein.
<b>Immunogen Region</b>	91-140 aa
<b>Gene ID</b>	<a href="#">2938</a>
<b>Gene Symbol</b>	<a href="#">GSTA1</a>
<b>Dilution range</b>	IHC-P 1:50-300ELISA 1:5000-20000
<b>Specificity</b>	The antibody detects endogenous GSTA1.
<b>Tissue Specificity</b>	Liver.
<b>Purification</b>	The antibody was affinity-purified from rabbit serum by affinity-chromatography using specific immunogen.
<b>Note</b>	For Research Use Only (RUO).
<b>Protein Name</b>	Glutathione S-transferase A1 GST HA subunit 1 GST class-alpha member 1 GST-epsilon GSTA1-1 GTH1 Glutathione S-transferase A1, N-terminally processed
<b>Clonality</b>	Polyclonal
<b>Conjugation</b>	Unconjugated

<b>Isotype</b>	IgG
<b>Formulation</b>	PBS, pH 7.4, containing 0.02% sodium azide as Preservative and 50% Glycerol.
<b>Concentration</b>	1 mg/ml
<b>Storage Instruction</b>	Store at -20°C, and avoid repeat freeze-thaw cycles.
<b>Database Links</b>	<a href="https://www.ncbi.nlm.nih.gov/RefSeq/record/NC_019969.2">HGNC:4626OMIM:138359</a>
<b>Alternative Names</b>	Glutathione S-transferase A1 GST HA subunit 1 GST class-alpha member 1 GST-epsilon GSTA1-1 GTH1 Glutathione S-transferase A1, N-terminally processed
<b>Function</b>	Conjugation of reduced glutathione to a wide number of exogenous and endogenous hydrophobic electrophiles.
<b>Sequence and Domain Family</b>	The C-terminal domain may form a component of the hydrophobic substrate-binding site, but in contrast appears not to be directly involved in GSH binding and is not absolutely essential for catalytic activity.
<b>Cellular Localization</b>	Cytoplasm.

---

**St John's Laboratory Ltd**

**F** +44 (0)207 681 2580

**T** +44 (0)208 223 3081

**W** <http://www.stjohnslabs.com/>

**E** [info@stjohnslabs.com](mailto:info@stjohnslabs.com)