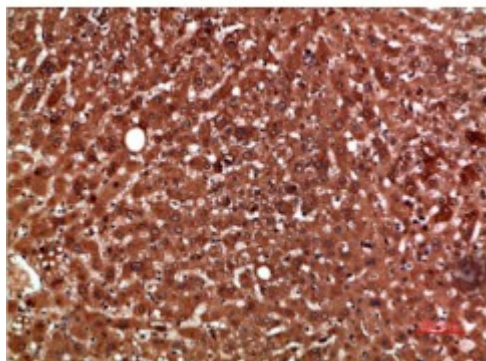


Anti-PON1 antibody



Description	Rabbit polyclonal to PON1.
Model	STJ98804
Host	Rabbit
Reactivity	Human
Applications	ELISA, IHC
Immunogen	Synthetic peptide from human PON1 protein.
Immunogen Region	51-100 aa
Gene ID	5444
Gene Symbol	PON1
Dilution range	IHC-P 1:50-300ELISA 1:5000-20000
Specificity	The antibody detects endogenous PON1.
Tissue Specificity	Plasma, associated with HDL (at protein level). Expressed in liver, but not in heart, brain, placenta, lung, skeletal muscle, kidney or pancreas.
Purification	The antibody was affinity-purified from rabbit serum by affinity-chromatography using specific immunogen.
Note	For Research Use Only (RUO).
Protein Name	Serum paraoxonase/arylesterase 1 PON 1 Aromatic esterase 1 A-esterase 1 K-45 Serum aryldialkylphosphatase 1
Clonality	Polyclonal
Conjugation	Unconjugated

Isotype	IgG
Formulation	PBS, pH 7.4, containing 0.02% sodium azide as Preservative and 50% Glycerol.
Concentration	1 mg/ml
Storage Instruction	Store at -20°C, and avoid repeat freeze-thaw cycles.
Database Links	HGNC:9204OMIM:168820
Alternative Names	Serum paraoxonase/arylesterase 1 PON 1 Aromatic esterase 1 A-esterase 1 K-45 Serum aryldialkylphosphatase 1
Function	Hydrolyzes the toxic metabolites of a variety of organophosphorus insecticides. Capable of hydrolyzing a broad spectrum of organophosphate substrates and lactones, and a number of aromatic carboxylic acid esters. Mediates an enzymatic protection of low density lipoproteins against oxidative modification and the consequent series of events leading to atheroma formation.
Cellular Localization	Secreted, extracellular space.
Post-translational Modifications	Glycosylated. The signal sequence is not cleaved.; Present in two forms, form B contains a disulfide bond, form A does not.

St John's Laboratory Ltd

F +44 (0)207 681 2580

T +44 (0)208 223 3081

W <http://www.stjohnslabs.com/>

E info@stjohnslabs.com