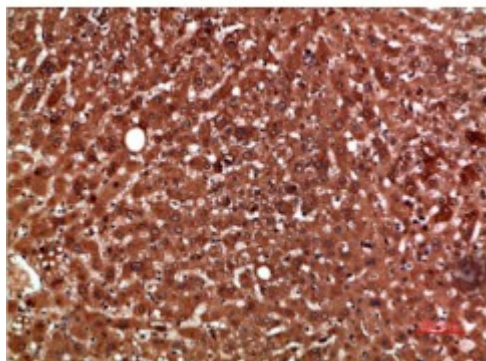


## Anti-PON1 antibody



<b>Description</b>	Rabbit polyclonal to PON1.
<b>Model</b>	STJ98804
<b>Host</b>	Rabbit
<b>Reactivity</b>	Human
<b>Applications</b>	ELISA, IHC
<b>Immunogen</b>	Synthetic peptide from human PON1 protein.
<b>Immunogen Region</b>	51-100 aa
<b>Gene ID</b>	<a href="#">5444</a>
<b>Gene Symbol</b>	<a href="#">PON1</a>
<b>Dilution range</b>	IHC-P 1:50-300ELISA 1:5000-20000
<b>Specificity</b>	The antibody detects endogenous PON1.
<b>Tissue Specificity</b>	Plasma, associated with HDL (at protein level). Expressed in liver, but not in heart, brain, placenta, lung, skeletal muscle, kidney or pancreas.
<b>Purification</b>	The antibody was affinity-purified from rabbit serum by affinity-chromatography using specific immunogen.
<b>Note</b>	For Research Use Only (RUO).
<b>Protein Name</b>	Serum paraoxonase/arylesterase 1 PON 1 Aromatic esterase 1 A-esterase 1 K-45 Serum aryldialkylphosphatase 1
<b>Clonality</b>	Polyclonal
<b>Conjugation</b>	Unconjugated

<b>Isotype</b>	IgG
<b>Formulation</b>	PBS, pH 7.4, containing 0.02% sodium azide as Preservative and 50% Glycerol.
<b>Concentration</b>	1 mg/ml
<b>Storage Instruction</b>	Store at -20°C, and avoid repeat freeze-thaw cycles.
<b>Database Links</b>	<a href="https://www.ebi.ac.uk/ENSP/entry/HGNC:9204OMIM:168820">HGNC:9204OMIM:168820</a>
<b>Alternative Names</b>	Serum paraoxonase/arylesterase 1 PON 1 Aromatic esterase 1 A-esterase 1 K-45 Serum aryldialkylphosphatase 1
<b>Function</b>	Hydrolyzes the toxic metabolites of a variety of organophosphorus insecticides. Capable of hydrolyzing a broad spectrum of organophosphate substrates and lactones, and a number of aromatic carboxylic acid esters. Mediates an enzymatic protection of low density lipoproteins against oxidative modification and the consequent series of events leading to atheroma formation.
<b>Cellular Localization</b>	Secreted, extracellular space.
<b>Post-translational Modifications</b>	Glycosylated. The signal sequence is not cleaved.; Present in two forms, form B contains a disulfide bond, form A does not.

---

**St John's Laboratory Ltd**

**F** +44 (0)207 681 2580

**T** +44 (0)208 223 3081

**W** <http://www.stjohnslabs.com/>

**E** [info@stjohnslabs.com](mailto:info@stjohnslabs.com)