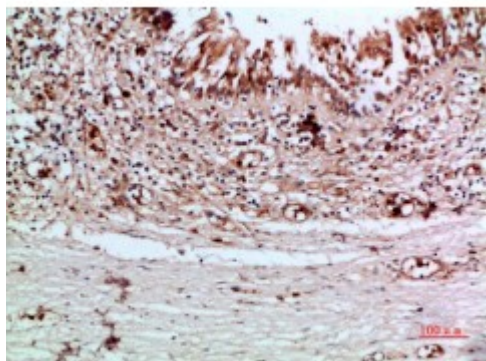


Anti-Thyroglobulin antibody



Description	Rabbit polyclonal to Thyroglobulin.
Model	STJ98806
Host	Rabbit
Reactivity	Human, Mouse, Rat
Applications	ELISA, IHC
Immunogen	Synthetic peptide from human Thyroglobulin protein.
Immunogen Region	2511-2560 aa
Gene ID	7038
Gene Symbol	TG
Dilution range	IHC-P 1:50-300ELISA 1:5000-20000
Specificity	The antibody detects endogenous Thyroglobulin.
Tissue Specificity	Thyroid gland specific.
Purification	The antibody was affinity-purified from rabbit serum by affinity-chromatography using specific immunogen.
Note	For Research Use Only (RUO).
Protein Name	Thyroglobulin Tg
Clonality	Polyclonal
Conjugation	Unconjugated
Isotype	IgG

Formulation	PBS, pH 7.4, containing 0.02% sodium azide as Preservative and 50% Glycerol.
Concentration	1 mg/ml
Storage Instruction	Store at -20°C, and avoid repeat freeze-thaw cycles.
Database Links	HGNC:11764OMIM:188450
Alternative Names	Thyroglobulin Tg
Function	Precursor of the iodinated thyroid hormones thyroxine (T4) and triiodothyronine (T3).
Cellular Localization	Secreted.
Post-translational Modifications	Sulfated tyrosines are desulfated during iodination.

St John's Laboratory Ltd

F +44 (0)207 681 2580

T +44 (0)208 223 3081

W <http://www.stjohnslabs.com/>

E info@stjohnslabs.com