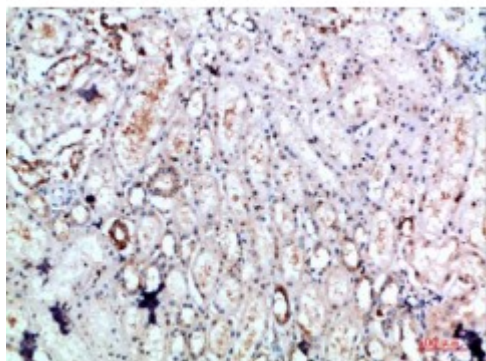


Anti-DLEU7 antibody



Description	Rabbit polyclonal to DLEU7.
Model	STJ98807
Host	Rabbit
Reactivity	Human
Applications	ELISA, IHC
Immunogen	Synthetic peptide from human DLEU7 protein.
Immunogen Region	51-100 aa
Gene ID	220107
Gene Symbol	DLEU7
Dilution range	IHC-P 1:50-300ELISA 1:5000-20000
Specificity	The antibody detects endogenous DLEU7.
Tissue Specificity	Ubiquitous.
Purification	The antibody was affinity-purified from rabbit serum by affinity-chromatography using specific immunogen.
Note	For Research Use Only (RUO).
Protein Name	Leukemia-associated protein 7 Deleted in lymphocytic leukemia 7
Clonality	Polyclonal
Conjugation	Unconjugated
Isotype	IgG

Formulation	PBS, pH 7.4, containing 0.02% sodium azide as Preservative and 50% Glycerol.
Concentration	1 mg/ml
Storage Instruction	Store at -20°C, and avoid repeat freeze-thaw cycles.
Database Links	HGNC:17567 OMIM:NA
Alternative Names	Leukemia-associated protein 7 Deleted in lymphocytic leukemia 7

St John's Laboratory Ltd

F +44 (0)207 681 2580

T +44 (0)208 223 3081

W <http://www.stjohnslabs.com/>

E info@stjohnslabs.com