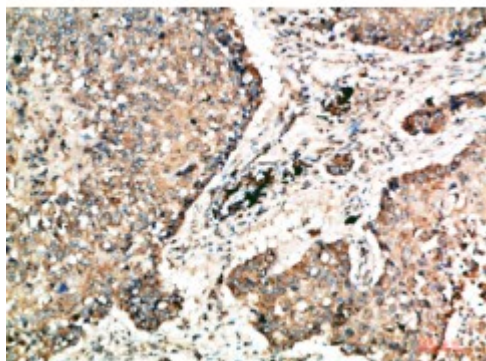


Anti-Napsin A antibody



| | |
|---------------------------|--|
| Description | Rabbit polyclonal to Napsin A. |
| Model | STJ98810 |
| Host | Rabbit |
| Reactivity | Human |
| Applications | ELISA, IHC |
| Immunogen | Synthetic peptide from human Napsin A protein. |
| Immunogen Region | 191-240 aa |
| Gene ID | 9476 |
| Gene Symbol | NAPSA |
| Dilution range | IHC-P 1:50-300ELISA 1:5000-20000 |
| Specificity | The antibody detects endogenous Napsin A. |
| Tissue Specificity | Expressed predominantly in adult lung (type II pneumocytes) and kidney and in fetal lung. Low levels in adult spleen and very low levels in peripheral blood leukocytes. |
| Purification | The antibody was affinity-purified from rabbit serum by affinity-chromatography using specific immunogen. |
| Note | For Research Use Only (RUO). |
| Protein Name | Napsin-A Aspartyl protease 4 ASP4 Asp 4 Napsin-1 TA01/TA02 |
| Clonality | Polyclonal |
| Conjugation | Unconjugated |

| | |
|------------------------------|--|
| Isotype | IgG |
| Formulation | PBS, pH 7.4, containing 0.02% sodium azide as Preservative and 50% Glycerol. |
| Concentration | 1 mg/ml |
| Storage Instruction | Store at -20°C, and avoid repeat freeze-thaw cycles. |
| Database Links | HGNC:13395OMIM:605631 |
| Alternative Names | Napsin-A Aspartyl protease 4 ASP4 Asp 4 Napsin-1 TA01/TA02 |
| Function | May be involved in processing of pneumocyte surfactant precursors. |
| Cellular Localization | Secreted |

St John's Laboratory Ltd

F +44 (0)207 681 2580
T +44 (0)208 223 3081

W <http://www.stjohnslabs.com/>
E info@stjohnslabs.com