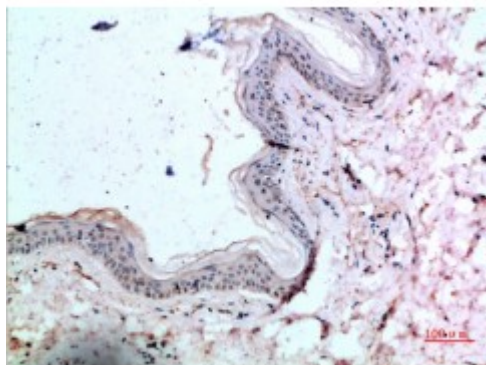


Anti-CTGF antibody



Description	Rabbit polyclonal to CTGF.
Model	STJ98812
Host	Rabbit
Reactivity	Human, Mouse, Rat
Applications	ELISA, IHC
Immunogen	Synthetic peptide from human CTGF protein.
Immunogen Region	141-190 aa
Gene ID	1490
Gene Symbol	CTGF
Dilution range	IHC-P 1:50-300ELISA 1:5000-20000
Specificity	The antibody detects endogenous CTGF.
Tissue Specificity	Expressed in bone marrow and thymic cells. Also expressed one of two Wilms tumors tested.
Purification	The antibody was affinity-purified from rabbit serum by affinity-chromatography using specific immunogen.
Note	For Research Use Only (RUO).
Protein Name	Connective tissue growth factor CCN family member 2 Hypertrophic chondrocyte-specific protein 24 Insulin-like growth factor-binding protein 8 IBP-8 IGF-binding protein 8 IGFBP-8
Clonality	Polyclonal

Conjugation	Unconjugated
Isotype	IgG
Formulation	PBS, pH 7.4, containing 0.02% sodium azide as Preservative and 50% Glycerol.
Concentration	1 mg/ml
Storage Instruction	Store at -20°C, and avoid repeat freeze-thaw cycles.
Database Links	HGNC:25000MIM:121009
Alternative Names	Connective tissue growth factor CCN family member 2 Hypertrophic chondrocyte-specific protein 24 Insulin-like growth factor-binding protein 8 IBP-8 IGF-binding protein 8 IGFBP-8
Function	Major connective tissue mitogen secreted by vascular endothelial cells. Promotes proliferation and differentiation of chondrocytes. Mediates heparin- and divalent cation-dependent cell adhesion in many cell types including fibroblasts, myofibroblasts, endothelial and epithelial cells. Enhances fibroblast growth factor-induced DNA synthesis.
Cellular Localization	Secreted, extracellular space, extracellular matrix Secreted

St John's Laboratory Ltd

F +44 (0)207 681 2580

T +44 (0)208 223 3081

W <http://www.stjohnslabs.com/>

E info@stjohnslabs.com