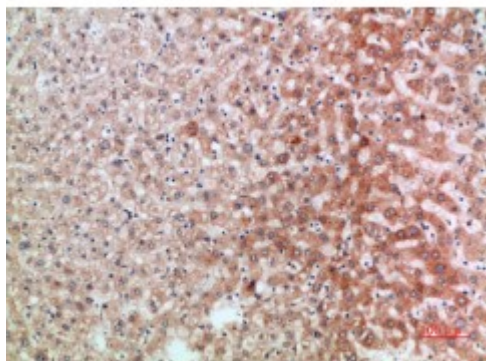


Anti-ST2 antibody



Description	Rabbit polyclonal to ST2.
Model	STJ98813
Host	Rabbit
Reactivity	Human
Applications	ELISA, IHC
Immunogen	Synthetic peptide from human ST2 protein.
Immunogen Region	251-300 aa
Gene ID	9173
Gene Symbol	IL1RL1
Dilution range	IHC-P 1:50-300ELISA 1:5000-20000
Specificity	The antibody detects endogenous ST2.
Tissue Specificity	Highly expressed in kidney, lung, placenta, stomach, skeletal muscle, colon and small intestine. Isoform A is prevalently expressed in the lung, testis, placenta, stomach and colon. Isoform B is more abundant in the brain, kidney and the liver. Isoform C is not detected in brain, heart, liver, kidney and skeletal muscle. Expressed on T-cells in fibrotic liver; at protein level. Overexpressed in fibrotic and cirrhotic liver.
Purification	The antibody was affinity-purified from rabbit serum by affinity-chromatography using specific immunogen.
Note	For Research Use Only (RUO).
Protein Name	Interleukin-1 receptor-like 1 Protein ST2

Clonality	Polyclonal
Conjugation	Unconjugated
Isotype	IgG
Formulation	PBS, pH 7.4, containing 0.02% sodium azide as Preservative and 50% Glycerol.
Concentration	1 mg/ml
Storage Instruction	Store at -20°C, and avoid repeat freeze-thaw cycles.
Database Links	HGNC:5998OMIM:601203
Alternative Names	Interleukin-1 receptor-like 1 Protein ST2
Function	Receptor for interleukin-33 (IL-33); signaling requires association of the coreceptor IL1RAP. Its stimulation recruits MYD88, IRAK1, IRAK4, and TRAF6, followed by phosphorylation of MAPK3/ERK1 and/or MAPK1/ERK2, MAPK14, and MAPK8. Possibly involved in helper T-cell function. Isoform B: Inhibits IL-33 signaling.
Cellular Localization	Isoform C: Cell membrane.. Isoform B: Secreted.. Cell membrane

St John's Laboratory Ltd

F +44 (0)207 681 2580

T +44 (0)208 223 3081

W <http://www.stjohnslabs.com/>

E info@stjohnslabs.com