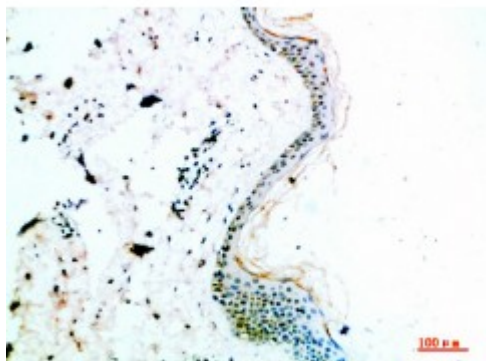


Anti-COL14A1 antibody



Description	Rabbit polyclonal to COL14A1.
Model	STJ98820
Host	Rabbit
Reactivity	Human, Mouse, Rat
Applications	ELISA, IHC
Immunogen	Synthetic peptide from human COL14A1 protein.
Immunogen Region	1571-1620 aa
Gene ID	7373
Gene Symbol	COL14A1
Dilution range	IHC-P 1:50-300ELISA 1:5000-20000
Specificity	The antibody detects endogenous COL14A1.
Purification	The antibody was affinity-purified from rabbit serum by affinity-chromatography using specific immunogen.
Note	For Research Use Only (RUO).
Protein Name	Collagen alpha-1 XIV chain Undulin
Clonality	Polyclonal
Conjugation	Unconjugated
Isotype	IgG
Formulation	PBS, pH 7.4, containing 0.02% sodium azide as Preservative and 50%

	Glycerol.
Concentration	1 mg/ml
Storage Instruction	Store at -20°C, and avoid repeat freeze-thaw cycles.
Database Links	HGNC:2191OMIM:120324
Alternative Names	Collagen alpha-1 XIV chain Undulin
Function	Plays an adhesive role by integrating collagen bundles. It is probably associated with the surface of interstitial collagen fibrils via COL1. The COL2 domain may then serve as a rigid arm which sticks out from the fibril and protrudes the large N-terminal globular domain into the extracellular space, where it might interact with other matrix molecules or cell surface receptors .
Cellular Localization	Secreted, extracellular space, extracellular matrix
Post-translational Modifications	Lysines at the third position of the tripeptide repeating unit (G-X-Y) are hydroxylated in all cases and bind carbohydrates. Prolines at the third position of the tripeptide repeating unit (G-X-Y) are hydroxylated in some or all of the chains. May contain numerous cysteine residues involved in inter- and intramolecular disulfide bonding.