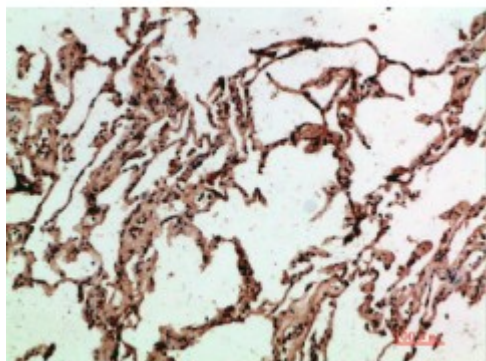


Anti-ADI1 antibody



Description	Rabbit polyclonal to ADI1.
Model	STJ98823
Host	Rabbit
Reactivity	Human, Mouse, Rat
Applications	ELISA, IHC
Immunogen	Synthetic peptide from human ADI1 protein.
Immunogen Region	71-120 aa
Gene ID	55256
Gene Symbol	ADI1
Dilution range	IHC-P 1:50-300ELISA 1:5000-20000
Specificity	The antibody detects endogenous ADI1.
Tissue Specificity	Detected in heart, colon, lung, stomach, brain, spleen, liver, skeletal muscle and kidney.
Purification	The antibody was affinity-purified from rabbit serum by affinity-chromatography using specific immunogen.
Note	For Research Use Only (RUO).
Protein Name	1,2-dihydroxy-3-keto-5-methylthiopentene dioxygenase Acireductone dioxygenase Fe 2+-requiring ARD Fe-ARD Membrane-type 1 matrix metalloproteinase cytoplasmic tail-binding protein 1 MTCBP-1 Submergence-induce

Clonality	Polyclonal
Conjugation	Unconjugated
Isotype	IgG
Formulation	PBS, pH 7.4, containing 0.02% sodium azide as Preservative and 50% Glycerol.
Concentration	1 mg/ml
Storage Instruction	Store at -20°C, and avoid repeat freeze-thaw cycles.
Database Links	HGNC:30576OMIM:613400
Alternative Names	1,2-dihydroxy-3-keto-5-methylthiopentene dioxygenase Acireductone dioxygenase Fe 2+-requiring ARD Fe-ARD Membrane-type 1 matrix metalloproteinase cytoplasmic tail-binding protein 1 MTCBP-1 Submergence-induce
Function	Catalyzes the formation of formate and 2-keto-4-methylthiobutyrate (KMTB) from 1,2-dihydroxy-3-keto-5-methylthiopentene (DHK-MTPene). Also down-regulates cell migration mediated by MMP14. Necessary for hepatitis C virus replication in an otherwise non-permissive cell line.
Cellular Localization	Cytoplasm. Nucleus. Cell membrane. Peripheral membrane protein. Cytoplasmic side. Localizes to the plasma membrane when complexed to MMP14.

St John's Laboratory Ltd

F +44 (0)207 681 2580

T +44 (0)208 223 3081

W <http://www.stjohnslabs.com/>

E info@stjohnslabs.com