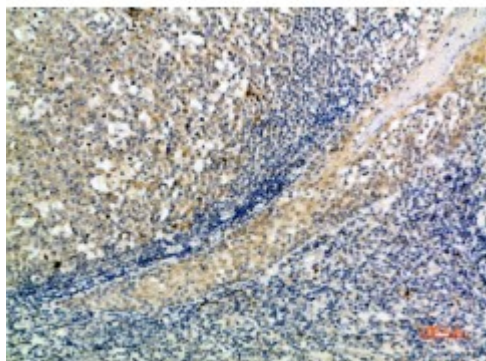


Anti-ATG10 antibody



Description	Rabbit polyclonal to ATG10.
Model	STJ98826
Host	Rabbit
Reactivity	Human
Applications	ELISA, IHC
Immunogen	Synthetic peptide from human ATG10 protein.
Immunogen Region	1-50 aa
Gene ID	83734
Gene Symbol	ATG10
Dilution range	IHC-P 1:50-300ELISA 1:5000-20000
Specificity	The antibody detects endogenous ATG10.
Purification	The antibody was affinity-purified from rabbit serum by affinity-chromatography using specific immunogen.
Note	For Research Use Only (RUO).
Protein Name	Ubiquitin-like-conjugating enzyme ATG10 Autophagy-related protein 10 APG10-like
Clonality	Polyclonal
Conjugation	Unconjugated
Isotype	IgG

Formulation	PBS, pH 7.4, containing 0.02% sodium azide as Preservative and 50% Glycerol.
Concentration	1 mg/ml
Storage Instruction	Store at -20°C, and avoid repeat freeze-thaw cycles.
Database Links	HGNC:20315OMIM:610800
Alternative Names	Ubiquitin-like-conjugating enzyme ATG10 Autophagy-related protein 10 APG10-like
Function	E2-like enzyme involved in autophagy. Acts as an E2-like enzyme that catalyzes the conjugation of ATG12 to ATG5. ATG12 conjugation to ATG5 is required for autophagy. Likely serves as an ATG5-recognition molecule. Not involved in ATG12 conjugation to ATG3 . Plays a role in adenovirus-mediated cell lysis.
Cellular Localization	Cytoplasm

St John's Laboratory Ltd

F +44 (0)207 681 2580

T +44 (0)208 223 3081

W <http://www.stjohnslabs.com/>

E info@stjohnslabs.com